

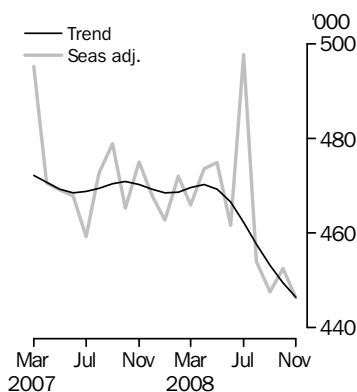
OVERSEAS ARRIVALS AND DEPARTURES

AUSTRALIA

EMBARGO: 11.30AM (CANBERRA TIME) MON 12 JAN 2009

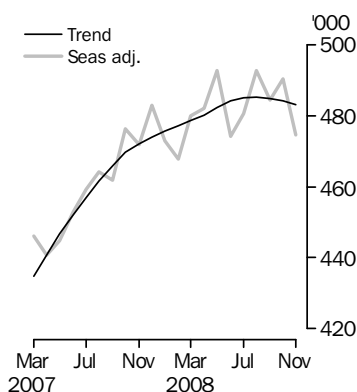
Visitor arrivals

Short-term



Resident departures

Short-term



KEY FIGURES

	Nov '08	Oct '08 to Nov '08 %	Nov '07 to Nov '08 %
	'000	change	change
Short-term visitor arrivals			
Trend	446.4	-0.7	-5.1
Seasonally adjusted	446.3	-1.4	..
Original	469.8
Short-term resident departures			
Trend	483.1	-0.2	2.3
Seasonally adjusted	474.5	-3.2	..
Original	432.7

TAKE CARE!
Overseas Arrivals
understated
See page 2
MISSING DATA

.....

.. not applicable

KEY POINTS

SHORT-TERM VISITOR ARRIVALS

- *Trend estimates:* Short-term visitor arrivals to Australia during November 2008 (446,400 movements), decreased by 0.7% compared with October 2008 (449,400 movements). This followed monthly decreases of 1.0% for September 2008 and 0.8% for October 2008.
- Currently, trend estimates for arrivals are 5.1% lower than in November 2007.
- *Seasonally adjusted estimates:* During November 2008, arrivals (446,300 movements) decreased by 1.4% compared with October 2008 (452,500 movements). This followed a monthly decrease of 1.4% for September 2008 and a monthly increase of 1.1% for October 2008.
- *Original estimates:* There were 469,800 arrivals to Australia in November 2008.

SHORT-TERM RESIDENT DEPARTURES

- *Trend estimates:* Short-term resident departures from Australia during November 2008 (483,100 movements), recorded a 0.2% decrease compared with October 2008 (484,300 movements). This followed minimal monthly decreases in September 2008 and October 2008.
- Currently, trend estimates for departures are 2.3% higher than in November 2007.
- *Seasonally adjusted estimates:* During November 2008, departures (474,500 movements) decreased by 3.2% compared with October 2008 (490,300 movements). This followed a monthly decrease of 1.7% for September 2008 and a monthly increase of 1.2% for October 2008.
- *Original estimates:* There were 432,700 departures from Australia during November 2008.

INQUIRIES

For further information about these and related statistics, contact the National Information and Referral Service on 1300 135 070 or Anne Ward on Canberra (02) 6252 6871.

NOTES

FORTHCOMING ISSUES

<i>ISSUE</i>	<i>RELEASE DATE</i>
December 2008	6 February 2009
January 2009	6 March 2009
February 2009	6 April 2009
March 2009	8 May 2009
April 2009	4 June 2009
May 2009	7 July 2009

DATA NOTES

This publication contains movement data which should not be interpreted as 'persons'. See paragraph 5 of the Explanatory Notes for more detail.

The statistics in this publication have been rounded to the nearest 100 for short-term movements and to the nearest 10 for permanent and long-term movements. As a result, sums of the components may not add exactly to totals. Analysis featured in this publication is based on unrounded data. Calculations made on rounded data may differ to those published.

MISSING DATA

The Australian Government Department of Immigration and Citizenship has advised that November 2008 data excludes 3,580 arrivals. This represents 0.4% of all arrivals in November 2008. For further information refer to the DATA QUALITY ISSUES APPENDIX, paragraph NOVEMBER 2008 PROCESSING in this issue.

CHANGES IN THIS ISSUE

There are no changes in this issue.

ABBREVIATIONS

ARIMA	autoregressive integrated moving average
DIAC	Australian Government Department of Immigration and Citizenship
NZ	New Zealand
OAD	overseas arrivals and departures
SAR	Special Administrative Region
SARS	Severe Acute Respiratory Syndrome
STRD	short-term resident departure
STVA	short-term visitor arrival
TRIPS	Travel and Immigration Processing System
UK, CIs & IOM	United Kingdom, Channel Islands and Isle of Man
USA	United States of America

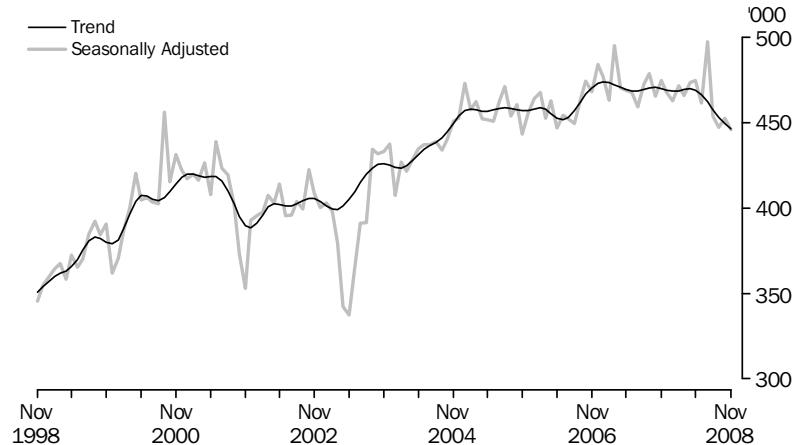
Brian Pink
Australian Statistician

MAIN FEATURES

SHORT-TERM VISITOR ARRIVALS

In trend terms, short-term visitor arrivals to Australia during November 2008 (446,400 movements) declined by 0.7% compared with October 2008 (449,400 movements). Currently, short-term visitor arrivals are 5.1% lower than in November 2007.

SHORT-TERM VISITOR ARRIVALS, Australia



The following table presents the top ten source countries (based on original estimates) for short-term visitor arrivals during November 2008. When trend estimates for short-term visitor arrivals for November 2008 and November 2007 were compared the highest percentage increase was recorded by Malaysia (4.9%) while the highest percentage decrease was recorded by Korea (22.8%) followed closely by Japan (22.7%).

SHORT-TERM VISITOR ARRIVALS, Australia(a)—November 2008

	Trend	Seasonally Adjusted	Original	Oct 08 to Nov 08	Nov 07 to Nov 08
	'000	'000	'000	Trend % change	Trend % change
New Zealand	92.3	92.0	89.8	0.4	-1.7
UK, Cls & IOM(b)	53.3	51.6	60.7	-0.9	-5.5
Japan	34.9	34.2	38.7	-2.4	-22.7
United States of America	36.9	38.2	38.4	-0.2	-6.4
China	25.4	26.1	29.1	-0.3	-18.9
Singapore	22.2	21.3	27.5	-1.3	0.9
Malaysia	14.4	16.3	18.8	2.0	4.9
Korea	15.3	13.3	14.6	-6.8	-22.8
Germany	12.6	12.5	13.9	-0.1	-0.7
Canada	10.3	10.6	11.7	-1.2	3.9

(a) Top 10 source countries based on original estimates.

(b) United Kingdom, Channel Islands and Isle of Man.

'What if....? Future scenarios

The most recent trend estimates for short-term visitor arrivals are likely to be revised when the next month's seasonally adjusted estimates become available. To assist in

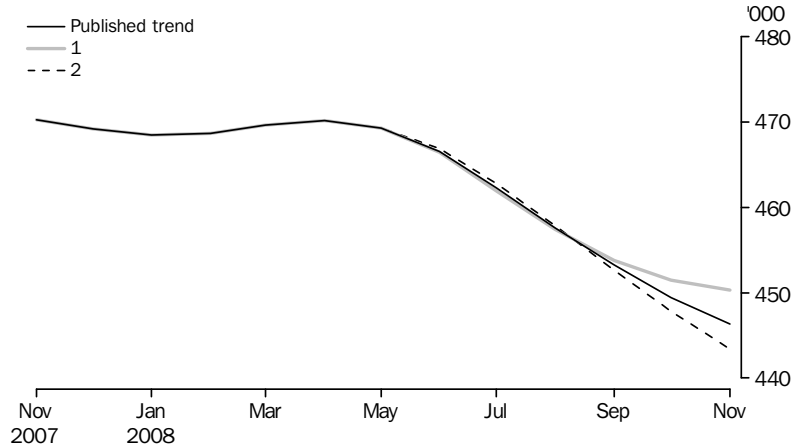
MAIN FEATURES *continued*

'What if....? Future scenarios *continued*

analysing these movement trends, the approximate effects of two possible scenarios on the previous trend estimate of short-term visitor arrivals is presented:

- 1 The December seasonally adjusted estimate of visitor arrivals is 2.8% higher than November.
- 2 The December seasonally adjusted estimate of visitor arrivals is 2.8% lower than November.

WHAT IF...? REVISIONS TO STVA TREND ESTIMATES, Australia

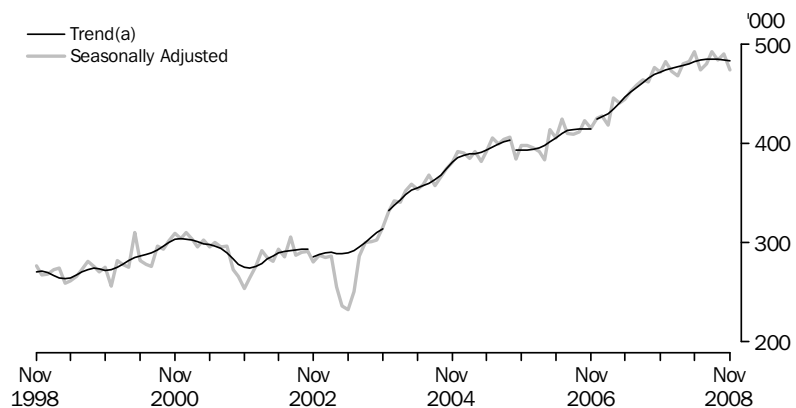


The figure of 2.8% for visitor arrivals represents the average absolute monthly percentage change for visitor arrivals over the last ten years. For further information on the effect of new seasonally adjusted estimates on short-term visitor arrival trend estimates see paragraph 27 of the Explanatory Notes.

SHORT-TERM RESIDENT DEPARTURES

In trend terms in November 2008, short-term resident departures (483,100 movements) recorded a decrease of 0.2% compared with October 2008 (484,300 movements). Short-term resident departures are currently 2.3% higher than in November 2007.

SHORT-TERM RESIDENT DEPARTURES, Australia



(a) Breaks in trend series — see Explanatory Notes, paragraph 25.

MAIN FEATURES *continued*

SHORT-TERM RESIDENT DEPARTURES *continued*

The following table presents the top ten destinations (based on original estimates) for short-term resident departures during November 2008. When trend estimates for short-term resident departures for November 2008 and November 2007 were compared the highest percentage increase was recorded by Indonesia (14.4%) while the highest percentage decrease was recorded by UK, CIs & IOM (8.0%).

SHORT-TERM RESIDENT DEPARTURES, Australia(a)—November 2008

	Trend	Seasonally Adjusted	Original	Oct 08 to Nov08	Nov 07 to Nov 08
	'000	'000	'000	Trend % change	Trend % change
New Zealand	76.1	78.2	72.4	—	-0.6
United States of America	41.3	39.5	35.8	-1.0	-1.3
Thailand	31.7	31.8	30.2	-1.4	-0.1
Indonesia	30.9	26.2	24.0	-1.2	14.4
China	22.7	22.7	21.5	0.8	-6.6
India	11.8	11.1	20.3	0.5	12.3
Hong Kong	17.9	17.0	19.8	0.1	1.5
UK, CIs & IOM(b)	33.7	32.8	19.7	-0.8	-8.0
Fiji	19.7	19.8	18.3	-0.1	5.8
Singapore	17.7	17.1	16.6	-0.9	-7.0

— nil or rounded to zero (including null cells)

(a) Top 10 destination countries based on original estimates.

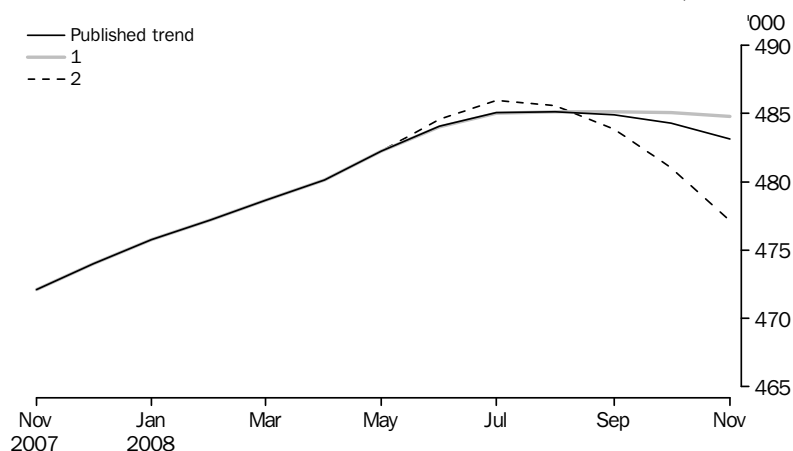
(b) United Kingdom, Channel Islands and Isle of Man.

'What if....? Future scenarios

The most recent trend estimates for short-term resident departures are likely to be revised when the next month's seasonally adjusted estimates become available. To assist in analysing these movement trends, the approximate effects of two possible scenarios on the previous trend estimate of short-term resident departures is presented:

- 1 The December seasonally adjusted estimate of resident departures is 2.9% higher than November.
- 2 The December seasonally adjusted estimate of resident departures is 2.9% lower than November.

WHAT IF...? REVISIONS TO STRD TREND ESTIMATES, Australia



MAIN FEATURES *continued*

'What if....? Future scenarios continued

The figure of 2.9% for resident departures represents the average absolute monthly percentage change for resident departures over the last ten years. For further information on the effect of new seasonally adjusted estimates on short-term resident departure trend estimates see paragraph 27 of the Explanatory Notes.

PERMANENT AND LONG-TERM MOVEMENTS

Statistics on overseas arrivals and departures relate to the number of movements of travellers rather than the number of travellers. Care should be taken when using permanent and long-term movements data as it is known that some individuals who travel multiple times in a year are counted each time they cross Australia's borders (see paragraph 5 of the Explanatory Notes). Permanent and long-term movements in this publication are not an appropriate source of migration statistics. For further information refer to *Australian Demographic Statistics* (cat. no. 3101.0) and *Information Paper: Statistical Implications of Improved Methods for Estimating Net Overseas Migration, Australia, 2007* (cat. no. 3107.0.55.005).

There were 14,000 permanent (settler) arrivals to Australia during November 2008, an increase of 11.8% compared with November 2007 (12,510 movements). People born in UK, CIs & IOM accounted for the largest proportion of settlers (16%), followed by people born in New Zealand (15%), India (11%) and China (9%).

There were 5,760 Australian residents departing permanently from Australia during November 2008, an increase of 5.4% compared with November 2007 (5,460 movements).

STATISTICAL SIGNIFICANCE

The above presentation of movements in estimates does not take into account whether the change in movement is statistically significant. Care should be taken when interpreting the impact of numeric and/or percentage change. Please see the Standard Errors section of this issue for more detail.

TOTAL MOVEMENT, ARRIVALS—Category of Movement

	PERMANENT		LONG-TERM		Total permanent and long-term arrivals	SHORT-TERM(a)				Total arrivals(a)
	Settlers	Australian residents	Overseas visitors	Australian residents		Overseas visitors (Original)	Overseas visitors (Seasonally Adjusted)(b)	Overseas visitors (Trend)(c)	Total	
Calendar years										
2005	128 750	103 910	209 620	442 280	4 724.7	5 499.0	10 666.0	
2006	133 880	107 040	238 570	479 480	4 898.6	5 532.4	10 910.5	
2007	141 650	108 510	285 570	535 730	5 403.8	5 644.1	11 583.6	
Financial years										
2005–06	131 590	103 900	221 920	457 410	4 790.1	5 484.1	10 731.6	
2006–07	140 150	110 040	263 300	513 490	5 114.6	5 641.2	11 269.3	
2007–08	149 370	110 830	321 850	582 040	5 692.5	5 629.4	11 903.9	
2007										
September	11 390	8 220	18 800	38 410	480.2	435.3	478.8	470.4	954.0	
October	10 840	8 130	20 380	39 350	590.5	465.7	465.4	470.9	1 095.5	
November	12 510	9 630	17 900	40 040	420.2	498.8	475.1	470.2	959.0	
December	12 040	17 030	16 060	45 130	367.2	615.0	468.0	469.3	1 027.3	
2008										
January	12 960	8 980	41 690	63 640	693.8	446.1	462.7	468.5	1 203.5	
February	13 420	8 980	51 190	73 590	411.1	543.5	472.0	468.7	1 028.2	
March	14 660	9 870	27 670	52 200	425.8	513.7	466.0	469.7	991.8	
April	12 500	7 640	22 960	43 100	456.1	424.1	473.6	470.2	923.4	
May	13 180	7 170	19 670	40 010	420.3	380.9	474.8	469.3	841.2	
June	13 050	8 640	24 500	46 190	445.2	382.7	461.6	466.6	874.0	
July	11 460	8 160	44 860	64 480	554.4	531.6	497.7	462.3	1 150.5	
August	15 460	8 780	26 560	50 800	486.3	420.2	454.0	457.6	957.2	
September	13 920	9 100	24 990	48 000	504.1	402.2	447.6	453.2	954.4	
October	13 700	8 950	29 140	51 790	614.2	456.0	452.5	449.4	1 122.0	
November	14 000	9 950	25 030	48 970	434.8	469.8	446.3	446.4	953.5	

.. not applicable

(a) Figures for short-term movement are based on a sample and are subject to sampling error. See paragraphs 10 and 11 of Explanatory Notes for more detail.

(b) For information on seasonally adjusted estimates see paragraphs 18 to 22 of Explanatory Notes.

(c) For information on trend estimates see paragraphs 23 to 25 of Explanatory Notes.

TOTAL MOVEMENT, DEPARTURES—Category of Movement

	PERMANENT		LONG-TERM		Total permanent and long-term departures	SHORT-TERM(a)				Total departures(a)
	Australian residents	Australian residents	Overseas visitors	Australian residents (Original)		Australian residents (Seasonally Adjusted)(b)	Australian residents (Trend)(c)	Overseas visitors		
	no.	no.	no.	'000		'000	'000	'000	'000	
Calendar years										
2005	64 400	94 080	93 300	251 780	4 755.6	5 532.4	10 539.8	
2006	69 400	101 210	94 930	265 540	4 940.6	5 538.1	10 744.2	
2007	74 960	102 250	113 700	290 910	5 462.3	5 702.9	11 456.1	
Financial years										
2005–06	67 850	98 110	92 180	258 140	4 834.9	5 516.2	10 609.3	
2006–07	72 100	101 610	101 490	275 200	5 127.1	5 654.0	11 056.4	
2007–08	76 920	102 070	124 010	303 000	5 699.5	5 670.0	11 672.5	
2007										
September	5 520	6 680	7 890	20 090	560.6	461.8	466.0	401.4	982.1	
October	5 360	6 740	7 000	19 100	435.0	476.3	469.7	451.6	905.7	
November	5 460	6 430	12 140	24 030	429.9	471.9	472.1	520.9	974.8	
December	6 940	8 320	20 510	35 770	633.4	482.9	474.0	500.3	1 169.5	
2008										
January	10 500	15 010	12 060	37 560	417.9	473.0	475.8	584.7	1 040.2	
February	5 730	7 930	9 070	22 730	365.7	467.9	477.2	492.6	881.1	
March	6 850	9 160	9 700	25 710	459.2	479.9	478.6	517.7	1 002.5	
April	6 590	8 750	8 290	23 630	466.5	482.2	480.2	463.0	953.1	
May	5 730	7 740	7 880	21 360	488.5	492.7	482.2	408.0	917.9	
June	5 200	6 730	12 570	24 500	531.5	474.1	484.1	400.0	956.0	
July	6 430	8 000	11 260	25 700	483.5	480.6	485.1	471.9	981.1	
August	7 410	9 770	9 660	26 850	485.4	492.8	485.2	480.0	992.3	
September	5 750	6 590	10 440	22 790	575.7	484.5	484.9	357.6	956.1	
October	6 000	7 090	9 710	22 800	458.0	490.3	484.3	434.6	915.4	
November	5 760	6 610	15 800	28 160	432.7	474.5	483.1	496.6	957.4	

.. not applicable

(a) Figures for short-term movement are based on a sample and are subject to sampling error. See paragraphs 10 and 11 of Explanatory Notes for more detail.

(b) For information on seasonally adjusted estimates see paragraphs 18 to 22 of Explanatory Notes.

(c) For information on trend estimates see paragraphs 23 to 25 of Explanatory Notes.

SHORT-TERM MOVEMENT(a), VISITOR ARRIVALS—Country of Residence(b): Trend(c)

Country of residence	2008									
	Feb	Mar	Apr	May	Jun	Jul	Aug	Sep	Oct	Nov
	'000	'000	'000	'000	'000	'000	'000	'000	'000	'000
OCEANIA AND ANTARCTICA—										
Fiji	2.3	2.4	2.5	2.5	2.5	2.5	2.5	2.5	2.5	2.6
New Caledonia	3.7	3.8	3.8	3.8	3.8	3.8	3.8	3.8	3.8	3.8
New Zealand	93.3	93.4	93.2	92.6	92.0	91.5	91.4	91.6	92.0	92.3
Papua New Guinea	2.8	2.9	3.0	3.1	3.2	3.3	3.4	3.5	3.6	3.7
<i>Total(d)</i>	105.2	105.6	105.8	105.6	105.2	104.8	104.7	105.0	105.5	105.9
NORTH-WEST EUROPE—										
Austria	1.4	1.4	1.5	1.6	1.6	1.6	1.5	1.4	1.4	1.3
Denmark	2.0	2.0	1.9	1.9	1.9	1.9	1.9	1.9	1.9	1.9
France	6.7	6.8	6.9	7.0	7.1	7.2	7.2	7.2	7.2	7.2
Germany	13.0	13.0	12.9	12.8	12.7	12.7	12.7	12.6	12.6	12.6
Ireland	5.8	5.8	5.8	5.8	5.7	5.7	5.7	5.7	5.6	5.6
Netherlands	4.4	4.5	4.6	4.7	4.7	4.6	4.5	4.5	4.4	4.4
Norway	1.4	1.4	1.4	1.4	1.4	1.4	1.4	1.4	1.4	1.4
Sweden	3.0	3.0	2.9	2.9	2.9	2.9	2.8	2.8	2.7	2.7
Switzerland	3.5	3.5	3.5	3.5	3.5	3.4	3.3	3.3	3.2	3.1
UK, Cls & IOM	57.2	57.6	57.5	57.2	56.5	55.7	55.0	54.4	53.8	53.3
<i>Total(d)</i>	100.7	101.3	101.4	101.1	100.4	99.5	98.4	97.4	96.5	95.7
SOUTHERN AND EASTERN EUROPE—										
Italy	4.3	4.3	4.4	4.4	4.4	4.4	4.3	4.2	4.2	4.1
Spain	1.9	1.9	1.8	1.8	1.8	1.8	1.8	1.8	1.7	1.7
<i>Total(d)</i>	11.8	11.8	11.8	11.8	11.8	11.8	11.8	11.7	11.6	11.6
NORTH AFRICA AND THE MIDDLE EAST—										
Israel	1.2	1.3	1.2	1.3	1.3	1.3	1.3	1.4	1.4	1.4
United Arab Emirates	3.6	3.5	3.5	3.4	3.3	3.3	3.3	3.3	3.4	3.5
<i>Total(d)</i>	8.4	8.5	8.5	8.4	8.4	8.3	8.4	8.4	8.5	8.6
SOUTH-EAST ASIA—										
Indonesia	7.8	7.7	7.7	7.8	7.9	8.0	8.0	8.0	7.9	7.8
Malaysia	14.4	14.5	14.5	14.3	14.0	13.8	13.8	13.8	14.1	14.4
Philippines	3.6	3.6	3.6	3.6	3.6	3.7	3.7	3.7	3.7	3.7
Singapore	22.5	22.6	22.6	22.7	22.8	22.8	22.8	22.7	22.5	22.2
Thailand	6.6	6.7	6.8	6.9	6.9	6.8	6.7	6.5	6.3	6.2
<i>Total(d)</i>	59.2	59.5	59.7	59.8	59.9	59.8	59.5	59.2	58.9	58.5
NORTH-EAST ASIA—										
China (excludes SARs and Taiwan Province)	32.4	32.7	32.4	31.4	29.9	28.3	27.0	26.1	25.5	25.4
Hong Kong (SAR of China)	12.1	12.2	12.3	12.2	12.1	11.9	11.7	11.6	11.6	11.6
Japan	41.1	40.1	39.5	39.2	38.8	38.2	37.5	36.6	35.7	34.9
Korea	19.1	19.1	19.3	19.6	19.7	19.4	18.6	17.6	16.4	15.3
Taiwan	6.1	6.2	6.3	6.3	6.3	6.2	6.2	6.3	6.4	6.6
<i>Total(d)</i>	111.0	110.6	110.1	109.0	107.1	104.4	101.4	98.6	96.1	94.2
SOUTHERN AND CENTRAL ASIA—										
India	9.4	9.5	9.6	9.7	9.8	9.9	9.9	9.8	9.7	9.7
<i>Total(d)</i>	11.7	11.8	11.9	12.0	12.2	12.3	12.3	12.3	12.2	12.2
AMERICAS—										
Canada	10.0	10.3	10.5	10.7	10.8	10.8	10.7	10.6	10.5	10.3
United States of America	38.3	38.0	38.0	37.9	37.8	37.6	37.4	37.2	37.0	36.9
<i>Total(d)</i>	53.1	53.1	53.4	53.6	53.6	53.5	53.2	52.8	52.4	52.1
SUB-SAHARAN AFRICA—										
South Africa	5.6	5.6	5.7	5.8	5.9	5.9	5.9	5.8	5.7	5.6
<i>Total(d)</i>	7.4	7.5	7.7	7.9	8.0	8.1	8.0	7.8	7.7	7.5
Total(d)(e)	468.7	469.7	470.2	469.3	466.6	462.3	457.6	453.2	449.4	446.4

- (a) Figures for short-term movement are based on a sample and are subject to sampling error. See paragraphs 10 and 11 of Explanatory Notes for more detail.
- (b) For information on country classification see paragraphs 7 and 8 of Explanatory Notes.

- (c) For information on trend estimates see paragraphs 23 to 25 of Explanatory Notes.
- (d) Includes other countries in the region.
- (e) Includes not stated/inadequately described.

SHORT-TERM MOVEMENT(a), VISITOR ARRIVALS—Country of Residence(b): **Seasonally Adjusted(c)**

Country of residence	2008									
	Feb	Mar	Apr	May	Jun	Jul	Aug	Sep	Oct	Nov
	'000	'000	'000	'000	'000	'000	'000	'000	'000	'000
OCEANIA AND ANTARCTICA—										
Fiji	2.2	2.4	2.6	2.5	2.3	2.8	2.5	2.1	2.6	2.8
New Caledonia	3.7	3.8	4.1	3.8	3.3	4.3	3.7	4.0	3.6	3.9
New Zealand	96.1	90.6	91.2	98.7	90.6	91.9	87.9	88.5	98.2	92.0
Papua New Guinea	2.8	2.7	3.0	3.1	3.3	3.5	3.3	3.4	3.7	3.8
<i>Total(d)</i>	108.2	102.3	104.0	112.1	104.2	108.5	100.9	101.1	111.6	106.3
NORTH-WEST EUROPE—										
Austria	1.2	1.4	1.6	1.6	1.6	1.6	1.5	1.3	1.4	1.3
Denmark	2.0	2.1	1.9	1.8	1.8	1.9	2.1	1.8	2.0	1.8
France	6.5	6.8	7.1	6.7	7.2	7.6	6.9	7.4	7.4	6.9
Germany	12.7	12.9	13.1	12.7	15.5	15.9	12.7	12.7	12.6	12.5
Ireland	5.8	6.3	5.5	5.6	5.8	5.7	5.9	5.6	5.8	5.3
Netherlands	4.4	4.3	4.6	4.7	5.2	4.4	4.3	4.2	4.6	4.6
Norway	1.5	1.4	1.4	1.4	1.4	1.4	1.3	1.4	1.4	1.4
Sweden	3.0	3.0	2.8	3.1	2.9	2.8	3.0	2.7	2.8	2.6
Switzerland	3.6	3.4	3.5	3.4	3.5	3.5	3.4	3.2	3.1	3.1
UK, Cls & IOM	58.0	56.9	58.9	58.2	56.6	53.5	54.2	56.3	54.7	51.6
<i>Total(d)</i>	100.8	100.9	102.8	101.3	104.7	100.5	97.5	98.9	98.0	93.5
SOUTHERN AND EASTERN EUROPE—										
Italy	4.3	4.0	4.7	4.3	4.5	9.9	4.1	4.3	4.1	4.2
Spain	2.0	1.7	4.0	1.6	2.1	4.2	1.6	2.0	1.7	1.5
<i>Total(d)</i>	12.0	11.6	14.7	11.1	12.0	23.8	11.8	11.8	11.7	11.4
NORTH AFRICA AND THE MIDDLE EAST—										
Israel	1.3	1.1	1.3	1.3	1.4	1.1	1.3	1.5	1.4	1.3
United Arab Emirates	4.2	3.2	3.5	3.4	3.5	3.2	2.8	3.4	3.7	3.5
<i>Total(d)</i>	9.2	7.9	8.2	9.1	8.6	8.1	7.2	9.0	9.2	8.4
SOUTH-EAST ASIA—										
Indonesia	7.5	8.1	8.1	6.7	8.2	7.7	8.2	9.5	6.6	7.5
Malaysia	14.2	14.4	13.9	15.2	13.7	14.3	14.3	11.3	14.4	16.3
Philippines	4.1	3.3	3.5	3.4	3.7	6.7	4.0	3.5	3.7	3.8
Singapore	21.9	24.3	21.6	22.6	22.0	23.7	23.2	22.6	22.6	21.3
Thailand	6.8	6.6	6.5	6.7	8.2	6.3	6.6	6.6	5.8	6.5
<i>Total(d)</i>	58.7	61.4	58.1	58.9	60.1	63.8	60.9	58.0	57.4	59.3
NORTH-EAST ASIA—										
China (excludes SARs and Taiwan Province)	30.7	32.5	36.9	30.3	28.8	28.9	25.3	26.0	25.9	26.1
Hong Kong (SAR of China)	11.5	11.8	12.2	13.2	12.6	11.3	11.1	11.8	11.9	11.8
Japan	41.2	41.8	38.9	39.0	37.0	39.8	39.2	36.1	34.5	34.2
Korea	19.2	18.2	19.3	19.6	19.1	21.2	19.1	17.3	16.5	13.3
Taiwan	6.1	6.3	6.0	6.7	7.0	5.9	5.7	6.1	6.0	7.8
<i>Total(d)</i>	109.0	110.9	113.5	109.0	104.9	107.4	100.7	97.7	95.2	93.9
SOUTHERN AND CENTRAL ASIA—										
India	9.2	9.4	9.7	9.2	10.1	10.0	10.4	10.0	8.5	10.3
<i>Total(d)</i>	11.5	11.7	12.0	11.5	12.4	12.4	13.0	12.5	11.0	12.7
AMERICAS										
Canada	10.8	9.7	10.4	10.8	10.3	12.0	10.6	10.1	10.2	10.6
United States of America	39.8	37.1	37.5	38.1	31.5	42.2	38.0	36.0	36.1	38.2
<i>Total(d)</i>	55.5	51.6	52.8	53.8	47.1	64.4	53.8	51.1	50.9	53.6
SUB-SAHARAN AFRICA—										
South Africa	5.4	5.8	5.8	5.8	5.6	6.1	6.2	5.7	5.6	5.3
<i>Total(d)</i>	7.1	7.7	7.6	8.0	7.6	8.7	8.2	7.6	7.6	7.1
Total(d)(e)	472.0	466.0	473.6	474.8	461.6	497.7	454.0	447.6	452.5	446.3

(a) Figures for short-term movement are based on a sample and are subject to sampling error. See paragraphs 10 and 11 of Explanatory Notes for more detail.

(b) For information on country classification see paragraphs 7 and 8 of Explanatory Notes.

(c) For information on seasonally adjusted estimates see paragraphs 18 to 22 of Explanatory Notes.

(d) Includes other countries in the region.

(e) Includes not stated/inadequately described.

SHORT-TERM MOVEMENT(a), VISITOR ARRIVALS—Country of Residence(b): Original

Country of residence	CALENDAR YEAR		FINANCIAL YEAR		2008					
	2006	2007	2006-07	2007-08	Jun	Jul	Aug	Sep	Oct	Nov
	'000	'000	'000	'000	'000	'000	'000	'000	'000	'000
OCEANIA AND ANTARCTICA—										
Fiji	29.6	26.3	29.0	26.9	1.9	2.3	2.1	1.9	2.7	3.0
New Caledonia	39.2	41.4	40.7	43.5	2.1	3.3	2.5	3.6	3.0	3.9
New Zealand	1 075.8	1 138.0	1 115.1	1 121.3	91.2	106.7	93.6	104.7	112.3	89.8
Papua New Guinea	30.5	33.2	32.1	33.9	3.4	4.3	2.9	3.2	3.9	3.9
<i>Total(c)</i>	<i>1 211.2</i>	<i>1 277.5</i>	<i>1 254.8</i>	<i>1 265.1</i>	<i>102.7</i>	<i>122.6</i>	<i>104.5</i>	<i>116.4</i>	<i>125.2</i>	<i>104.6</i>
NORTH-WEST EUROPE—										
Austria	19.2	17.8	19.1	16.7	0.8	1.9	1.3	1.1	1.7	1.6
Denmark	23.0	22.7	22.7	23.8	1.1	2.0	1.0	1.5	2.4	2.0
France	67.4	73.7	69.9	78.0	5.1	12.9	7.0	6.2	7.2	7.4
Germany	148.2	151.6	148.7	155.2	8.3	16.6	11.6	12.6	15.0	13.9
Ireland	59.1	67.3	63.3	69.2	5.8	5.6	4.2	4.7	6.4	5.4
Netherlands	51.2	51.2	51.1	53.1	2.8	5.6	2.7	4.0	5.9	5.3
Norway	15.6	16.2	16.2	17.0	0.9	1.5	0.7	1.0	1.3	1.4
Sweden	35.6	35.1	35.1	35.4	1.5	1.6	1.3	1.8	3.0	3.2
Switzerland	42.5	41.9	42.8	41.9	1.8	3.2	2.1	3.1	3.3	4.0
UK, CIs & IOM	734.2	688.9	733.3	686.3	27.7	40.3	35.9	39.5	56.8	60.7
<i>Total(c)</i>	<i>1 221.4</i>	<i>1 194.8</i>	<i>1 229.4</i>	<i>1 204.6</i>	<i>57.7</i>	<i>93.8</i>	<i>69.5</i>	<i>77.5</i>	<i>105.5</i>	<i>107.9</i>
SOUTHERN AND EASTERN EUROPE—										
Italy	51.7	53.6	53.3	52.8	3.4	13.3	5.7	4.2	3.9	4.2
Spain	18.2	20.7	19.5	22.9	1.3	5.5	2.1	2.2	2.0	1.8
<i>Total(c)</i>	<i>125.6</i>	<i>139.4</i>	<i>134.0</i>	<i>141.7</i>	<i>8.1</i>	<i>26.6</i>	<i>12.8</i>	<i>10.8</i>	<i>11.5</i>	<i>13.4</i>
NORTH AFRICA AND THE MIDDLE EAST—										
Israel	15.0	15.2	15.7	14.6	0.8	1.0	1.1	1.5	1.5	1.4
United Arab Emirates	24.7	33.8	29.3	36.9	3.5	8.9	4.6	2.5	2.6	2.6
<i>Total(c)</i>	<i>75.8</i>	<i>87.5</i>	<i>82.7</i>	<i>92.6</i>	<i>7.9</i>	<i>17.7</i>	<i>10.5</i>	<i>6.6</i>	<i>7.1</i>	<i>6.9</i>
SOUTH-EAST ASIA—										
Indonesia	83.6	89.1	85.2	93.1	8.7	8.8	6.6	10.5	8.2	5.6
Malaysia	150.3	159.4	157.1	166.0	10.9	12.8	13.9	11.0	11.2	18.8
Philippines	37.5	42.4	41.3	42.7	3.3	5.6	3.5	3.2	3.9	3.6
Singapore	253.4	263.8	263.5	266.5	27.3	20.5	18.8	18.2	21.1	27.5
Thailand	74.0	83.0	77.1	84.2	6.4	6.7	6.1	5.5	6.7	4.7
<i>Total(c)</i>	<i>632.1</i>	<i>682.5</i>	<i>664.0</i>	<i>701.1</i>	<i>60.8</i>	<i>60.4</i>	<i>53.3</i>	<i>52.2</i>	<i>55.2</i>	<i>64.0</i>
NORTH-EAST ASIA—										
China (excludes SARs and Taiwan Province)	308.5	357.6	338.4	375.2	18.2	34.8	22.0	19.3	21.7	29.1
Hong Kong (SAR of China)	154.8	147.0	153.1	146.7	11.6	13.0	10.4	9.2	11.0	9.8
Japan	651.0	573.0	610.2	521.2	28.3	38.7	48.0	35.3	33.9	38.7
Korea	260.8	253.3	270.8	236.2	16.0	23.3	18.7	13.4	16.8	14.6
Taiwan	93.8	92.7	92.3	85.0	7.4	7.4	6.2	5.6	6.0	6.0
<i>Total(c)</i>	<i>1 471.7</i>	<i>1 426.8</i>	<i>1 467.7</i>	<i>1 368.0</i>	<i>81.8</i>	<i>117.9</i>	<i>105.6</i>	<i>83.0</i>	<i>89.6</i>	<i>98.6</i>
SOUTHERN AND CENTRAL ASIA—										
India	83.8	95.2	88.0	107.7	10.2	9.0	9.2	7.9	8.1	9.9
<i>Total(c)</i>	<i>106.0</i>	<i>121.5</i>	<i>112.1</i>	<i>135.0</i>	<i>12.0</i>	<i>11.9</i>	<i>11.8</i>	<i>10.0</i>	<i>10.5</i>	<i>12.1</i>
AMERICAS—										
Canada	109.9	114.6	110.5	120.9	5.9	10.7	7.0	7.6	9.2	11.7
United States of America	456.1	459.7	455.4	454.5	35.9	50.4	34.2	26.7	31.5	38.4
<i>Total(c)</i>	<i>611.1</i>	<i>628.8</i>	<i>615.7</i>	<i>632.9</i>	<i>45.8</i>	<i>72.3</i>	<i>45.8</i>	<i>38.7</i>	<i>45.1</i>	<i>54.8</i>
SUB-SAHARAN AFRICA—										
South Africa	56.9	63.4	60.3	65.8	4.7	5.0	4.9	5.5	4.8	5.6
<i>Total(c)</i>	<i>77.1</i>	<i>84.9</i>	<i>80.6</i>	<i>88.1</i>	<i>5.9</i>	<i>8.4</i>	<i>6.5</i>	<i>7.1</i>	<i>6.4</i>	<i>7.5</i>
Total(c)(d)	5 532.4	5 644.1	5 641.2	5 629.4	382.7	531.6	420.2	402.2	456.0	469.8

(a) Figures for short-term movement are based on a sample and are subject to sampling error. See paragraphs 10 and 11 of Explanatory Notes for more detail.

(b) For information on country classification see paragraphs 7 and 8 of Explanatory Notes.

(c) Includes other countries in the region.

(d) Includes not stated/inadequately described.

SHORT-TERM MOVEMENT(a), VISITOR ARRIVALS—Intended Length of Stay and Main Reason for Journey: **Original**

	CALENDAR YEAR		FINANCIAL YEAR		2008					
	2006	2007	2006-07	2007-08	Jun	Jul	Aug	Sep	Oct	Nov
	'000	'000	'000	'000	'000	'000	'000	'000	'000	'000
Intended length of stay										
Under 1 week	1 711.9	1 720.9	1 725.4	1 685.5	115.8	119.9	129.7	114.6	138.4	147.8
1 and under 2 weeks	1 576.4	1 642.8	1 630.1	1 651.6	112.5	160.5	128.1	124.0	135.1	133.6
2 weeks and under 1 month	1 135.5	1 119.4	1 145.7	1 098.6	68.5	127.5	85.1	76.0	84.2	85.1
1 and under 2 months	443.6	457.2	454.3	461.1	32.8	47.3	25.1	30.2	34.4	35.7
2 and under 3 months	159.9	163.9	161.7	166.2	15.6	13.0	8.9	11.1	14.8	17.7
3 and under 6 months	223.6	234.8	229.4	244.1	17.6	26.9	19.3	19.3	21.0	25.3
6 and under 12 months	281.5	305.1	294.8	322.2	19.8	36.5	24.0	27.1	28.1	24.6
Total(b)	5 532.4	5 644.1	5 641.2	5 629.4	382.7	531.6	420.2	402.2	456.0	469.8
Main reason for journey										
Convention/conference	171.0	188.0	183.3	184.2	12.7	35.6	16.5	16.0	16.5	13.7
Business	615.5	650.5	640.7	664.6	50.8	56.6	54.1	51.7	58.2	57.5
Visiting friends/relatives	1 126.0	1 179.6	1 153.4	1 201.3	82.7	83.1	85.1	94.2	97.7	108.3
Holiday	2 886.5	2 826.8	2 896.1	2 754.1	175.7	220.7	200.0	184.5	220.7	233.7
Employment	155.4	169.3	163.8	180.1	14.5	14.7	14.1	15.2	14.6	14.9
Education	275.7	300.7	289.4	310.8	17.9	57.7	21.5	14.3	19.4	13.8
Other & not stated(c)	302.3	329.2	314.5	334.3	28.4	63.3	28.9	26.4	28.9	27.9
Total	5 532.4	5 644.1	5 641.2	5 629.4	382.7	531.6	420.2	402.2	456.0	469.8

(a) Figures for short-term movement are based on a sample and are subject to sampling error. See paragraphs 10 and 11 of Explanatory Notes for more detail.

(b) Includes not stated.

(c) Includes 'Exhibition' from July 1998.

Main destination	2008									
	Feb	Mar	Apr	May	Jun	Jul	Aug	Sep	Oct	Nov
	'000	'000	'000	'000	'000	'000	'000	'000	'000	'000
OCEANIA AND ANTARCTICA—										
Fiji	19.5	19.5	19.5	19.5	19.6	19.6	19.7	19.7	19.7	19.7
New Caledonia	1.7	1.8	1.8	1.7	1.7	1.6	1.5	1.5	1.5	1.5
New Zealand	75.7	75.5	75.4	75.4	75.5	75.6	75.8	75.9	76.0	76.1
Norfolk Island	2.4	2.4	2.4	2.3	2.2	2.1	2.0	1.9	1.9	1.9
Papua New Guinea	4.6	4.6	4.8	4.9	5.1	5.2	5.2	5.2	5.1	5.1
Vanuatu	3.8	3.8	4.0	4.2	4.4	4.6	4.7	4.7	4.7	4.6
<i>Total(d)</i>	112.6	112.7	113.0	113.5	113.8	114.1	114.3	114.3	114.3	114.2
NORTH-WEST EUROPE—										
France	7.5	7.6	7.7	7.8	7.9	8.0	8.1	8.2	8.2	8.2
Germany	5.2	5.2	5.3	5.5	5.7	5.8	5.8	5.9	5.9	5.9
Ireland	3.1	3.3	3.3	3.3	3.1	2.9	2.8	2.8	2.8	2.9
Netherlands	1.8	1.8	1.8	1.8	1.9	1.9	1.9	1.9	1.9	1.9
UK, CIs & IOM	35.6	35.3	35.2	35.2	35.1	34.9	34.6	34.3	33.9	33.7
<i>Total(d)</i>	58.8	59.0	59.3	59.4	59.4	59.2	58.8	58.6	58.4	58.3
SOUTHERN AND EASTERN EUROPE—										
Greece	3.6	3.6	3.8	3.9	3.9	3.9	3.9	3.9	4.0	4.0
Italy	10.0	10.1	10.1	10.2	10.3	10.4	10.6	10.7	10.8	10.8
Spain	2.3	2.4	2.4	2.4	2.4	2.3	2.2	2.2	2.1	2.0
<i>Total(d)</i>	24.3	24.7	25.1	25.4	25.6	25.7	25.6	25.5	25.4	25.4
NORTH AFRICA AND THE MIDDLE EAST—										
Lebanon	1.7	1.7	1.7	1.8	2.0	2.1	2.1	2.1	2.1	2.1
Turkey	1.8	1.7	1.7	1.8	1.9	2.1	2.2	2.4	2.6	2.7
<i>Total(d)</i>	13.4	13.4	13.7	14.1	14.6	15.1	15.5	16.0	16.4	16.8
SOUTH-EAST ASIA—										
Indonesia	31.1	31.0	30.6	30.4	30.6	31.1	31.3	31.4	31.3	30.9
Malaysia	15.4	15.4	15.6	15.8	16.0	16.1	16.1	16.0	16.1	16.1
Philippines	8.1	8.1	8.1	8.1	8.2	8.3	8.4	8.5	8.5	8.5
Singapore	18.4	18.1	18.0	17.9	18.0	18.0	18.0	18.0	17.9	17.7
Thailand	34.2	35.3	36.0	36.1	35.6	34.7	33.6	32.8	32.2	31.7
Viet Nam	13.0	13.3	13.6	14.0	14.3	14.4	14.5	14.6	14.6	14.6
<i>Total(d)</i>	124.3	125.5	126.3	127.0	127.4	127.3	126.8	126.2	125.3	124.3
NORTH-EAST ASIA—										
China (excludes SARs and Taiwan Province)	24.1	23.7	23.2	22.7	22.3	22.2	22.2	22.3	22.5	22.7
Hong Kong (SAR of China)	17.6	17.9	18.2	18.3	18.3	18.1	17.9	17.9	17.9	17.9
Japan	12.7	12.3	11.8	11.3	10.9	10.9	11.1	11.3	11.6	11.8
Korea	3.0	3.0	3.1	3.1	3.2	3.2	3.2	3.2	3.2	3.1
Taiwan	3.2	3.2	3.2	3.2	3.2	3.2	3.1	3.1	3.1	3.1
<i>Total(d)</i>	61.3	60.8	60.1	59.3	58.6	58.3	58.3	58.5	59.0	59.4
SOUTHERN AND CENTRAL ASIA—										
India	11.2	11.2	11.1	11.1	11.2	11.3	11.5	11.7	11.7	11.8
Sri Lanka	1.8	1.8	1.8	1.8	1.8	1.9	1.9	2.0	2.1	2.1
<i>Total(d)</i>	16.1	16.3	16.5	16.7	16.9	17.2	17.4	17.6	17.7	17.7
AMERICAS—										
Canada	8.4	8.5	8.5	8.5	8.5	8.4	8.3	8.1	8.0	7.9
United States of America	41.1	40.7	40.5	40.8	41.3	41.8	42.0	42.0	41.7	41.3
<i>Total(d)</i>	55.0	54.8	54.9	55.4	56.0	56.4	56.5	56.2	55.7	55.1
SUB-SAHARAN AFRICA—										
South Africa	5.5	5.4	5.3	5.1	5.1	5.0	5.1	5.1	5.1	5.0
<i>Total(d)</i>	9.1	9.0	8.8	8.8	8.8	8.9	9.0	9.0	9.0	8.9
Total(d)(e)	477.2	478.6	480.2	482.2	484.1	485.1	485.2	484.9	484.3	483.1

(a) Figures for short-term movement are based on a sample and are subject to sampling error. See paragraphs 10 and 11 of Explanatory Notes for more detail.

(b) For information on country classification see paragraphs 7 to 9 of Explanatory Notes.

(c) For information on trend estimates see paragraphs 23 to 25 of Explanatory Notes.

(d) Includes other countries in the region.

(e) Includes not stated/inadequately described.

2008

Main destination	2008									
	Feb	Mar	Apr	May	Jun	Jul	Aug	Sep	Oct	Nov
	'000	'000	'000	'000	'000	'000	'000	'000	'000	'000
OCEANIA AND ANTARCTICA—										
Fiji	19.5	20.0	19.0	19.6	19.4	19.0	21.1	19.1	19.4	19.8
New Caledonia	1.7	2.0	1.7	2.3	1.1	1.5	1.6	1.4	1.7	1.4
New Zealand	77.5	76.6	72.4	75.3	75.6	77.1	76.9	74.1	74.2	78.2
Norfolk Island	2.2	2.4	2.8	2.4	2.4	1.4	2.1	2.1	2.1	1.6
Papua New Guinea	3.9	5.0	4.9	4.5	5.3	5.5	5.3	5.0	5.1	4.9
Vanuatu	3.6	3.8	3.9	4.1	4.4	4.9	4.8	4.7	4.9	4.1
<i>Total(d)</i>	113.0	115.2	110.2	113.2	113.5	115.1	117.2	111.8	112.8	115.5
NORTH-WEST EUROPE—										
France	6.9	8.0	8.2	7.4	8.0	7.6	8.4	8.3	8.6	7.6
Germany	4.8	5.3	5.3	5.7	5.5	6.1	5.3	6.2	6.4	5.5
Ireland	2.9	4.3	3.3	3.2	3.0	2.7	2.8	2.6	3.0	3.0
Netherlands	1.7	1.8	1.9	1.8	2.0	1.8	1.7	1.8	2.0	1.8
Switzerland	1.2	1.5	2.1	1.7	1.5	1.8	1.7	1.6	1.6	2.0
UK, CIs & IOM	33.8	36.7	36.5	34.5	34.4	34.5	35.7	34.9	33.4	32.8
<i>Total(d)</i>	54.7	61.6	62.1	58.2	58.5	58.8	59.1	59.4	58.9	56.9
SOUTHERN AND EASTERN EUROPE—										
Greece	3.3	4.6	3.6	3.8	3.9	3.9	4.0	3.9	3.9	4.1
Italy	10.2	9.7	10.1	10.5	10.0	10.7	10.2	10.8	11.0	10.6
Spain	2.4	2.2	2.5	2.5	2.4	2.1	2.4	2.1	2.2	1.9
<i>Total(d)</i>	23.7	24.2	26.0	26.2	25.1	25.5	25.5	25.6	26.0	24.9
NORTH AFRICA AND THE MIDDLE EAST—										
Lebanon	0.8	1.7	1.9	1.6	2.2	2.2	2.2	2.0	2.1	2.1
Turkey	1.1	1.8	2.1	1.9	1.9	1.7	2.0	2.5	3.4	2.1
<i>Total(d)</i>	11.7	13.9	14.1	14.2	14.9	15.2	15.0	15.3	17.7	16.5
SOUTH-EAST ASIA—										
Indonesia	30.9	30.5	29.9	31.2	29.8	30.1	32.1	31.2	35.9	26.2
Malaysia	15.2	14.7	15.4	16.3	16.5	16.3	16.2	15.2	15.7	17.0
Philippines	8.7	7.8	8.0	8.1	7.6	8.1	9.5	8.5	7.9	8.4
Singapore	18.9	18.2	17.8	18.4	17.7	17.2	17.9	19.8	17.1	17.1
Thailand	32.4	34.1	37.6	40.0	34.7	32.2	33.6	33.3	32.6	31.8
Viet Nam	12.3	13.6	13.9	14.6	13.3	14.9	14.6	14.5	14.8	14.2
<i>Total(d)</i>	122.4	123.9	126.7	133.2	124.1	123.6	128.5	128.3	128.5	119.2
NORTH-EAST ASIA—										
China (excludes SARs and Taiwan Province)	24.0	24.1	23.9	23.4	19.9	21.8	23.6	22.1	22.5	22.7
Hong Kong (SAR of China)	17.3	17.4	18.0	20.5	18.5	17.1	16.8	16.7	21.2	17.0
Japan	13.0	12.0	10.8	11.7	10.9	10.9	10.9	11.4	10.9	13.0
Korea	3.1	2.8	3.1	3.1	3.2	3.5	3.3	3.1	3.0	3.2
Taiwan	3.0	3.3	3.3	3.1	3.2	3.2	2.9	3.3	3.1	3.1
<i>Total(d)</i>	60.6	60.2	60.0	62.3	56.4	57.4	58.1	57.1	61.7	59.5
SOUTHERN AND CENTRAL ASIA—										
India	10.7	11.7	11.6	10.2	10.6	11.5	12.5	11.2	12.1	11.1
Sri Lanka	1.7	1.6	1.8	2.1	1.6	1.9	2.0	1.8	2.3	2.1
<i>Total(d)</i>	15.3	16.2	16.7	17.2	16.1	17.0	18.3	17.3	18.0	17.4
AMERICAS—										
Canada	8.4	7.7	9.0	8.9	8.4	8.1	8.7	7.7	8.0	8.0
United States of America	42.5	39.5	39.9	41.5	39.9	41.9	43.4	43.3	41.0	39.5
<i>Total(d)</i>	56.1	53.0	54.8	56.4	54.7	55.7	59.1	57.0	55.0	53.3
SUB-SAHARAN AFRICA—										
South Africa	5.6	5.5	5.3	5.1	4.5	5.2	5.4	5.1	5.1	4.8
<i>Total(d)</i>	9.2	9.0	9.0	8.8	7.8	9.4	9.0	9.4	8.9	8.5
Total(d)(e)	467.9	479.9	482.2	492.7	474.1	480.6	492.8	484.5	490.3	474.5

(a) Figures for short-term movement are based on a sample and are subject to sampling error. See paragraphs 10 and 11 of Explanatory Notes for more detail.

(b) For information on country classification see paragraphs 7 to 9 of Explanatory Notes.

(c) For information on seasonally adjusted estimates see paragraphs 18 to 22 of Explanatory Notes.

(d) Includes other countries in the region.

(e) Includes not stated/inadequately described.

SHORT-TERM MOVEMENT(a), RESIDENT DEPARTURES—Main Destinations(b): Original

	CALENDAR YEAR		FINANCIAL YEAR		2008					
	2006	2007	2006-07	2007-08	Jun	Jul	Aug	Sep	Oct	Nov
<i>Main destination</i>	'000	'000	'000	'000	'000	'000	'000	'000	'000	'000
OCEANIA AND ANTARCTICA—										
Fiji	202.3	200.4	193.6	223.9	21.0	20.5	22.2	23.4	22.2	18.3
New Caledonia	13.9	15.3	14.9	17.1	1.3	1.7	1.6	1.9	1.7	1.3
New Zealand	864.7	902.0	883.3	913.4	58.4	71.4	73.8	77.9	67.9	72.4
Norfolk Island	22.8	25.1	24.5	27.6	2.1	1.1	2.1	2.2	2.6	1.8
Papua New Guinea	45.7	53.1	47.3	57.4	6.0	6.3	5.3	5.8	5.5	5.0
Vanuatu	40.2	46.8	44.4	46.9	4.8	5.3	4.9	5.7	5.6	4.3
<i>Total(c)</i>	1 249.7	1 303.1	1 267.4	1 347.2	99.2	112.5	114.8	122.6	110.4	107.7
NORTH-WEST EUROPE—										
France	72.5	94.1	76.4	99.8	14.3	7.3	8.9	14.5	6.2	3.9
Germany	69.9	60.9	58.9	64.7	8.5	6.1	6.2	8.8	4.7	4.2
Ireland	33.1	34.1	32.1	37.8	5.7	3.7	3.8	3.5	2.2	1.3
Netherlands	22.5	21.6	20.6	22.4	3.1	2.2	2.0	2.5	1.7	1.3
UK, Cls & IOM	412.8	428.4	415.2	429.5	52.7	41.9	46.9	46.5	24.0	19.7
<i>Total(c)</i>	674.7	708.3	669.7	723.6	94.2	69.6	74.3	81.6	41.9	34.2
SOUTHERN AND EASTERN EUROPE—										
Greece	45.4	49.4	45.3	48.7	11.0	7.8	6.2	5.1	1.5	0.9
Italy	108.7	114.5	107.6	120.3	17.2	11.9	12.2	23.1	7.2	4.5
Spain	24.8	27.6	26.5	28.5	3.8	2.3	2.3	3.9	1.9	1.0
<i>Total(c)</i>	279.2	303.6	285.9	307.9	52.5	38.2	32.6	42.4	15.0	10.2
NORTH AFRICA AND THE MIDDLE EAST—										
Lebanon	20.7	18.8	15.5	21.3	4.1	4.1	2.3	2.4	1.2	1.8
Turkey	22.7	23.0	22.9	23.4	3.7	1.9	2.1	3.2	2.3	1.0
<i>Total(c)</i>	137.1	150.2	135.4	164.2	17.4	14.9	12.6	16.9	15.6	18.0
SOUTH-EAST ASIA—										
Indonesia	194.7	282.5	231.4	328.1	37.2	35.4	36.5	39.2	37.9	24.0
Malaysia	168.0	181.2	172.5	185.6	16.3	17.6	14.1	16.7	15.1	15.6
Philippines	85.6	89.6	87.0	95.3	6.3	6.1	6.7	7.4	6.7	8.2
Singapore	211.1	221.5	208.3	224.4	19.0	18.9	16.7	19.2	17.3	16.6
Thailand	288.1	374.5	331.7	403.0	36.6	34.3	32.1	38.0	39.0	30.2
Viet Nam	125.3	155.9	143.3	159.2	11.7	12.2	10.5	14.7	13.5	13.8
<i>Total(c)</i>	1 111.4	1 351.8	1 217.7	1 446.0	131.1	128.5	119.7	139.9	133.7	113.6
NORTH-EAST ASIA—										
China (excludes SARs and Taiwan Province)	251.0	284.5	268.5	286.7	18.2	17.0	21.6	30.1	25.9	21.5
Hong Kong (SAR of China)	196.2	206.5	200.0	215.1	18.6	13.8	13.1	16.4	21.3	19.8
Japan	100.3	130.4	114.8	142.3	9.1	8.7	6.6	15.3	10.1	11.0
Korea	31.5	33.1	30.8	35.9	3.4	3.1	2.5	3.9	3.1	3.4
Taiwan	37.7	38.1	38.5	38.6	3.1	2.3	2.0	3.8	2.9	3.8
<i>Total(c)</i>	620.6	698.7	656.6	726.2	53.1	45.6	46.4	70.0	64.2	59.9
SOUTHERN AND CENTRAL ASIA—										
India	106.0	121.8	113.6	128.9	6.2	6.7	8.3	9.6	13.8	20.3
Sri Lanka	22.6	22.3	21.0	21.6	1.5	1.8	1.6	1.8	1.3	2.9
<i>Total(c)</i>	160.1	182.0	168.6	191.0	10.6	10.8	11.9	16.4	19.2	30.2
AMERICAS—										
Canada	90.5	93.7	91.9	99.8	12.2	9.3	11.4	7.8	3.9	4.1
United States of America	440.3	479.0	450.7	491.9	44.2	37.0	43.1	55.8	38.1	35.8
<i>Total(c)</i>	587.5	636.6	603.3	658.3	61.6	50.2	59.7	70.0	48.1	48.5
SUB-SAHARAN AFRICA—										
South Africa	57.2	58.9	58.7	61.3	4.0	4.5	4.7	5.7	4.6	5.1
<i>Total(c)</i>	94.3	103.4	97.8	106.5	7.3	9.1	8.5	10.4	8.3	8.8
Total(c)(d)	4 940.6	5 462.3	5 127.1	5 699.5	531.5	483.5	485.4	575.7	458.0	432.7

(a) Figures for short-term movement are based on a sample and are subject to sampling error. See paragraphs 10 and 11 of Explanatory Notes for more detail.

(b) For information on country classification see paragraphs 7 to 9 of Explanatory Notes.

(c) Includes other countries in the region.

(d) Includes not stated/inadequately described.

10

SHORT-TERM MOVEMENT(a), RESIDENT DEPARTURES—Intended Length of Stay and Main Reason for Journey: Original

	CALENDAR YEAR		FINANCIAL YEAR		2008					
	2006	2007	2006-07	2007-08	Jun	Jul	Aug	Sep	Oct	Nov
	'000	'000	'000	'000	'000	'000	'000	'000	'000	'000
Intended length of stay										
Under 1 week	657.3	708.3	668.4	743.5	61.3	58.6	64.7	61.3	70.7	66.0
1 and under 2 weeks	1 401.7	1 603.9	1 481.6	1 690.7	142.6	148.0	145.6	176.5	157.3	130.5
2 weeks and under 1 month	1 408.2	1 577.6	1 482.5	1 652.9	150.1	135.5	128.0	193.2	132.5	105.9
1 and under 2 months	810.6	896.1	837.4	920.4	106.7	76.9	87.6	96.7	51.7	57.9
2 and under 3 months	248.8	260.1	248.4	273.2	31.3	27.6	24.8	19.5	16.1	35.7
3 and under 6 months	230.4	233.1	228.8	235.7	26.1	21.7	20.2	17.8	17.8	24.6
6 and under 12 months	183.5	183.2	180.0	183.1	13.2	15.1	14.5	10.7	11.9	12.0
Total(b)	4 940.6	5 462.3	5 127.1	5 699.5	531.5	483.5	485.4	575.7	458.0	432.7
Main reason for journey										
Convention/conference	189.1	200.6	194.9	209.3	18.6	16.9	16.8	21.1	21.9	19.3
Business	736.6	772.2	752.9	773.5	63.2	58.9	63.3	65.1	66.2	66.0
Visiting friends/relatives	1 244.9	1 301.4	1 261.2	1 343.7	128.9	109.4	99.0	113.6	95.5	106.4
Holiday	2 332.7	2 716.1	2 469.5	2 891.2	279.9	256.3	264.3	328.3	235.4	201.0
Employment	113.2	120.2	120.4	122.1	9.2	9.9	10.1	8.4	10.6	9.7
Education	56.8	57.9	56.5	60.2	5.5	6.2	6.2	10.7	2.6	5.7
Other & not stated(c)	267.2	294.1	271.7	299.5	26.2	25.9	25.8	28.6	25.9	24.6
Total	4 940.6	5 462.3	5 127.1	5 699.5	531.5	483.5	485.4	575.7	458.0	432.7

(a) Figures for short-term movement are based on a sample and are subject to sampling error. See paragraphs 10 and 11 of Explanatory Notes for more detail.

(b) Includes not stated.

(c) Includes 'Exhibition' from July 1998.

11

SHORT-TERM MOVEMENT(a), VISITOR DEPARTURES—State Where Spent Most Time: Original

State where spent most time	CALENDAR YEAR		FINANCIAL YEAR		2008					
	2006	2007	2006-07	2007-08	Jun	Jul	Aug	Sep	Oct	Nov
	'000	'000	'000	'000	'000	'000	'000	'000	'000	'000
New South Wales	2 141.9	2 201.4	2 183.4	2 194.1	144.0	208.6	174.0	125.5	159.6	185.4
Victoria	940.2	977.5	962.8	986.7	73.8	67.6	73.0	60.7	75.6	95.9
Queensland	1 625.5	1 614.5	1 624.6	1 587.7	120.0	136.7	163.1	117.0	132.1	134.8
South Australia	160.2	171.1	170.5	170.0	9.5	11.5	15.0	10.6	12.8	16.3
Western Australia	501.5	541.7	523.8	551.3	40.8	33.1	39.8	33.0	41.9	49.5
Tasmania	46.5	46.3	47.5	45.7	2.1	2.1	2.5	2.0	2.5	4.3
Northern Territory	76.3	104.6	95.4	88.0	5.5	8.0	8.3	5.2	5.6	4.7
Australian Capital Territory	44.8	44.8	45.0	45.5	4.3	4.4	4.2	3.5	4.2	5.7
Other Territories	1.1	1.1	1.0	1.1	—	—	—	0.2	0.2	—
Total	5 538.1	5 702.9	5 654.0	5 670.0	400.0	471.9	480.0	357.6	434.6	496.6

— nil or rounded to zero (including null cells)

(a) Figures for short-term movement are based on a sample and are subject to sampling error. See paragraphs 10 and 11 of Explanatory Notes for more detail.

Country of birth	CALENDAR YEAR		FINANCIAL YEAR		2008					
	2006	2007	2006-07	2007-08	Jun	Jul	Aug	Sep	Oct	Nov
	no.	no.	no.	no.	no.	no.	no.	no.	no.	no.
Major group—										
Oceania and Antarctica	23 750	29 210	27 060	31 700	2 630	2 380	2 670	2 570	2 650	2 480
North-West Europe	26 820	27 450	26 900	27 170	1 830	1 580	2 450	2 660	2 920	2 610
Southern and Eastern Europe	3 360	3 490	3 480	3 570	290	210	410	400	370	410
North Africa and the Middle East	10 730	8 190	9 690	8 280	910	880	1 200	1 070	860	940
South-East Asia	18 580	19 630	19 470	21 160	1 930	1 670	2 050	1 610	1 660	1 860
North-East Asia	15 560	17 080	16 620	17 980	1 690	1 640	2 220	1 850	1 600	1 650
Southern and Central Asia	20 100	21 450	21 370	23 970	2 430	1 890	2 850	2 360	2 180	2 430
Americas	4 210	3 990	4 090	4 240	360	340	410	380	350	380
Sub-Saharan Africa	10 190	10 530	10 920	10 600	940	820	1 130	950	1 040	1 160
Total(b)	133 880	141 650	140 150	149 370	13 050	11 460	15 460	13 920	13 700	14 000
Selected source countries—										
China (excludes SARs and Taiwan Province)	10 970	12 620	12 010	12 960	1 260	1 200	1 730	1 450	1 160	1 250
Fiji	1 660	1 560	1 490	1 790	110	150	180	140	130	130
Hong Kong (SAR of China)	990	860	1 000	870	90	60	90	70	70	70
India	12 450	13 710	13 500	15 340	1 580	1 230	1 820	1 470	1 310	1 540
Indonesia	1 780	1 630	1 700	1 790	180	140	170	190	140	140
Iraq	2 440	1 940	2 210	2 320	330	440	380	430	310	260
Lebanon	1 380	1 250	1 390	1 430	110	60	140	110	110	120
Malaysia	2 930	3 030	2 900	3 520	280	190	350	290	240	510
New Zealand	20 350	25 740	23 910	27 600	2 310	2 070	2 300	2 240	2 280	2 170
Philippines	5 160	5 630	5 560	6 110	650	450	520	460	550	450
Serbia, Montenegro and Kosovo	540	510	570	520	50	20	90	30	30	40
Singapore	2 130	1 640	1 660	1 820	200	100	130	100	120	170
South Africa	3 810	4 190	4 000	5 170	550	430	550	500	560	670
Sri Lanka	2 500	2 870	2 720	3 620	370	290	440	390	290	330
Sudan	3 360	1 560	2 510	1 020	100	70	150	130	80	70
Taiwan	700	670	670	750	50	60	60	40	50	50
UK, CIs & IOM	23 320	23 650	23 220	23 240	1 520	1 350	2 040	2 240	2 480	2 260
United States of America	1 470	1 430	1 460	1 470	120	120	150	110	120	120
Viet Nam	2 920	2 930	3 140	2 690	170	250	330	250	250	250
Zimbabwe	1 020	970	940	1 020	90	70	80	60	110	90

(a) For information on country classification see paragraphs 7 and 8 of Explanatory Notes.

(b) Includes not stated/inadequately described.

EXPLANATORY NOTES

- INTRODUCTION**
- 1** This publication contains statistics of persons arriving in, and departing from, Australia, together with the major characteristics of travellers. More detailed statistics can be made available on request (see paragraph 36).
- SOURCE OF THE STATISTICS**
- 2** Persons arriving in, or departing from, Australia provide information in the form of incoming and outgoing passenger cards. Incoming persons also provide information in visa applications (apart from people travelling as Australian or New Zealand (NZ) citizens). These and other information available to the Department of Immigration and Citizenship (DIAC) serve as a source for statistics of overseas arrivals and departures (OAD).
- 3** In July 1998, DIAC revised the incoming and outgoing passenger cards and associated procedures as well as computer systems. Following these changes, some questions on the passenger cards were not compulsory and answers to these questions were not checked by Customs officers. The question on marital status was deleted. Data on marital status is now derived from visa applications (only for certain visa classes) and is therefore not available for Australian or NZ citizens. The changes also affect the data for 'previous country of residence' which is imputed for Australian and NZ citizens. For more information see the May 1998 issue of this publication. Since July 1998, there have been additional minor changes to both incoming and outgoing passenger cards.
- 4** From July 2001, DIAC adopted a new passenger card processing system which involved electronic imaging of passenger cards and intelligent character recognition of the data stored in the images. This process has yielded several improvements to the processing of passenger card data, most notably the detailed information about missing values. There have also been several changes to data quality. Information on these changes appears in the *Data Quality Issues* section of this publication.
- SCOPE**
- 5** Overseas arrivals and departures statistics relate to the number of movements of travellers rather than the number of travellers (i.e. multiple movements of individual persons during a given reference period are each counted separately). The statistics exclude the movements of operational air and ships' crew, transit passengers who pass through Australia but are not cleared for entry, passengers on pleasure cruises commencing and finishing in Australia, and unauthorised arrivals.
- STATE AND TERRITORY CLASSIFICATION**
- 6** Following the 1992 amendment to the *Acts Interpretation Act* to include the Indian Ocean Territories of Christmas Island and the Cocos (Keeling) Islands as part of geographic Australia, population estimates commencing with September quarter 1993 include estimates for these two territories. To reflect this change, another category of the state and territory classification has been created, known as Other Territories. Other Territories includes Jervis Bay Territory, Christmas Island and the Cocos (Keeling) Islands. OAD data for Other Territories are not available prior to February 1995.
- COUNTRY CLASSIFICATION**
- 7** The classification of countries in this publication is the Standard Australian Classification of Countries. For more detailed information refer to the ABS publication *Standard Australian Classification of Countries (SACC), Second Edition* (cat. no. 1269.0).
- 8** The statistics on country of birth, citizenship, residence or main destination have certain limitations because of reporting on passenger cards. For dissemination purposes the United Kingdom (England, Scotland, Wales, Northern Ireland), Channel Islands and Isle of Man are combined; Korea includes both the Republic of Korea and the Democratic People's Republic of Korea; and Serbia, Montenegro and Kosovo are combined.

EXPLANATORY NOTES *continued*

COUNTRY CLASSIFICATION

continued

9 A large number of short-term residents departing, state Europe as their main destination on the passenger card. These responses are grouped into inadequately described, unless otherwise indicated.

ESTIMATION METHOD

10 OAD statistics are derived from a combination of full enumeration and sampling. All permanent movements and all movements with a duration of stay of one year or more are fully enumerated. All movements with a duration of stay of less than one year are sampled. Statistics relating to these movements are therefore estimates which may differ from statistics which would have been obtained if details of all these movements had been processed. Sample standard errors can be found in the *Standard Errors* section of this publication.

11 Since January 1997 variable sample skips were used in the selection of records to be sampled. Separate skips were applied for each country of citizenship. Over a year about 3.5% of all short-term movements were selected for sampling. However, for operational reasons variable skips across months were ceased from August 2000. From January 2005, 4.9% of all short-term movements have been selected for sample. The skip values correspond to the lowest skip value (i.e. the highest sample selected) for each country from a sample design including individual month and direction of travel as sub-categories.

CONFIDENTIALITY

12 The *Census and Statistics Act, 1905* provides the authority for the ABS to collect statistical information, and requires that statistical output shall not be published or disseminated in a manner that is likely to enable the identification of a particular person or organisation. This requirement means that the ABS must take care and make assurances that any statistical information about individual respondents cannot be derived from published data.

13 Some techniques used to guard against identification or disclosure of confidential information in statistical tables are suppression of sensitive cells, random adjustments to cells with very small values and rounding. In these cases data may not sum to totals due to the confidentialisation of individual cells.

14 The statistics in this publication have been rounded to the nearest 100 for short-term movements and to the nearest 10 for permanent and long-term movements. As a result, sums of the components may not add exactly to totals. Analysis featured in the Key Points and Main Features of this publication is based on unrounded data. Calculations made on rounded data may differ to those published.

CORRECTIONS AND IMPUTATIONS

15 The imprecision due to sampling errors should not be confused with errors arising from imperfections in reporting, which may occur in any data collection, whether sampled or not. Every effort is made to minimise such errors, both through careful design of the passenger cards and through checks on the information once it is received. During the edit process some items are corrected where they conflict with other known information. Missing replies to certain items such as age, state and country of stay/residence are also imputed by reference to other related items. Information on non-response rates and data imputation appears in the *Data Quality Issues* section of this publication.

16 Errors of this kind differ from discrepancies arising from the fact that certain information reflects the travellers' intentions at the time the passenger cards were completed. These intentions are, of course, subject to change. Particularly affected is the distinction between permanent and temporary movement and in the latter case, length of intended stay, country in which most time will be spent and main reason for journey.

SEASONAL ADJUSTMENT AND TREND ESTIMATES

17 Seasonally adjusted and trend estimates of short-term overseas movements are shown in tables 1, 2, 3, 4, 7 and 8.

EXPLANATORY NOTES *continued*

SEASONAL ADJUSTMENT AND TREND ESTIMATES *continued*

18 Seasonally adjusted estimates are derived by estimating and removing systematic calendar related effects from the original series. In the short-term visitor arrival and short-term resident departure series, these calendar related effects are known as seasonal (e.g. increased travel in December due to the Christmas holiday period) and trading day influences (arising from the varying length of each month and the varying number of Sundays, Mondays, Tuesdays, etc. in each month). Each influence is estimated by separate seasonal and trading day factors which, when combined, are referred to as the combined adjustment factors.

19 From November 2004 ABS has introduced an improved method for removing trading day effects from seasonally adjusted estimates. Corrections for trading day effects are now applied as prior corrections to the original estimates, rather than being applied within the seasonal adjustment process. This is now consistent with the treatment of any corrections for large extremes, changes in level, changes in seasonal pattern, Easter, and other effects. This change in methodology will result in revisions to seasonally adjusted and trend estimates. From July 2003 concurrent seasonal adjustment methodology has been used to derive the combined adjustment factors. This means that data from the current month are used in estimating seasonal and trading day factors for the current and previous months. Concurrent seasonal adjustment replaces the forward factor methodology used since seasonal adjustment of short-term visitor arrivals began in 1969 and short-term resident departures in 1976.

20 Concurrent adjustment can result in revisions each month to the seasonally adjusted estimates for earlier periods. However, in most instances, the only noticeable revisions will be to the combined adjustment factors for the current month, the previous month and the same month a year ago. Although there is no specific information paper on concurrent adjustment to short-term visitor arrivals or resident departures, more detail on the method in general can be found in the *Information Paper: Introduction of Concurrent Seasonal Adjustment into the Retail Trade Series* (cat. no. 8514.0).

21 More recently, the ABS implemented improved methods of producing seasonally adjusted estimates, focused on the application of Autoregressive Integrated Moving Average (ARIMA) modelling techniques. The revision properties of the seasonally adjusted and trend estimates can be improved by the use of ARIMA modelling. ARIMA modelling relies on the characteristics of the series being analysed to project future period data. The projected values are temporary, intermediate values, that are only used internally to improve the estimation of the seasonal factors. The projected data do not affect the original estimates and are discarded at the end of the seasonal adjustment process. The OAD collection uses ARIMA modelling where appropriate for individual time series. The ARIMA model is assessed as part of the annual reanalysis and following the 2007–08 annual reanalysis 96% of time series use an ARIMA model. For more information on the details of ARIMA modelling see 'Feature article: Use of ARIMA modelling to reduce revisions' in the October 2004 issue of *Australian Economic Indicators* (cat. no. 1350.0).

22 Seasonal adjustment procedures do not aim to remove the irregular or non-seasonal influences which may be present in any particular month, such as the effect of major sporting and cultural events, changes in airfares and the fluctuation of the Australian dollar relative to other currencies. Irregular influences that are highly volatile can make it difficult to interpret the movement of the series even after adjustment for seasonal variation. Trend estimates take these irregular influences into account.

23 The trend estimates of short-term overseas visitor arrivals and short-term Australian resident departures are derived by applying a 13-term Henderson-weighted moving average to all months of the respective seasonally adjusted series except the first and last six months. Trend series are created for the last six months by applying surrogates of the Henderson weighted moving average to the seasonally adjusted series.

EXPLANATORY NOTES *continued*

SEASONAL ADJUSTMENT AND TREND ESTIMATES *continued*

24 While this technique enables smoothed data for the latest period to be produced, it does result in revisions to the smoothed series, principally of recent months, as additional observations become available. There may also be revisions as a result of the re-estimation of the seasonal factors. For further information, see *A Guide to Interpreting Time Series—Monitoring Trends* (cat. no. 1349.0).

25 Occasionally situations occur that necessitate breaks being applied to the trend series. These breaks are necessary because of a change in the underlying level of the original series. While the breaks apply to an individual country (e.g. Indonesia) a consequence is that breaks are also applied to the regional total series (e.g. Total South-East Asia) and the total series. Breaks currently included in the trend series are as follows:

- *October 2002: Short-term resident departures – Indonesia, Total South-East Asia and Total*—Trend series breaks due to the decrease in movements resulting from the Bali bombing of 12 October 2002.
- *December 2003: Short-term resident departures – Indonesia, Total South-East Asia and Total*—Trend series breaks due to a return to the trend levels experienced prior to the Bali bombing of 12 October 2002.
- *October 2005: Short-term resident departures – Indonesia, Total South-East Asia and Total*—Trend series breaks due to the decrease in movements resulting from the Bali bombing of 1 October 2005.
- *December 2006: Short-term resident departures – Indonesia, Total South-East Asia and Total*—Trend series breaks due to the increase in movements to Indonesia to levels closer to, but still lower than, the movements experienced prior to the Bali bombing of 1 October 2005.

26 An improved correction method has been implemented in the seasonal adjustment process, to remove the effects of Chinese New Year and Ramadan from the seasonally adjusted estimates.

- *Chinese New Year* — Chinese New Year often falls in February but on some occasions falls in January. The movement of Chinese New Year between the boundary of January and February can cause biased seasonally adjusted and trend estimates. The Chinese New Year proximity adjustment method takes into account the graduated increase in activity in the days leading up to the holiday period followed by a graduated return to the normal activity levels in the days following. The proximity correction is only applied to the series from January 1998, as it was not significant before this date. Further details on this adjustment method can be found in 'Estimating and removing the effects of Chinese New Year and Ramadan to improve the seasonal adjustment process' (ABS, *Australian Economic Indicators*, cat. no. 1350.0, November 2005 issue).
- *Ramadan* — Ramadan is the ninth month of the Islamic calendar and starts eleven days earlier each year in the Western calendar, so adjustments for this effect apply to different months over the years. The adjustment was made after the detection of a significant influence on travel for Malaysia and Indonesia associated with the end of the Islamic month of Ramadan. The estimates for Total South-East Asia were also corrected as a consequence of the Malaysia and Indonesia series corrections. Other time series did not have a significant Ramadan effect and were not corrected.

EFFECT OF NEW SEASONALLY ADJUSTED ESTIMATES ON TREND ESTIMATES

27 Under concurrent seasonal adjustment, the most recent seasonally adjusted and trend estimates are likely to be revised when original estimates for subsequent months become available. The trend revision is a combined result of the revision of the seasonally adjusted estimates and the revision derived from the use of asymmetric moving averages as future data become available. ABS research shows that about 75% of the total revision to the trend estimate at the current end of the time series is due to the use of different asymmetric moving averages when the original estimate for the next time

EXPLANATORY NOTES *continued*

EFFECT OF NEW SEASONALLY ADJUSTED ESTIMATES ON TREND ESTIMATES *continued*

period becomes available. To assess the reliability of the trend estimate at the current end, the 'what-if' charts present trend estimates under two different scenarios for the next time period. The charts show only the impact due to the changes of the asymmetric moving averages and do not include the unknown impact of revision to seasonal factor estimates that would arise when the original estimate for the next time period becomes available.

28 For a detailed discussion and analysis of OAD time series estimates, see the ABS *Demography Working Paper 2004/2 – Interpretation and Use of Overseas Arrivals and Departures Estimates* (cat. no. 3106.0.55.002), available on the ABS website.

29 For further information on the seasonal adjustment process contact the Assistant Director, Time Series Analysis on Canberra (02) 6252 6345 or by email at <time.series.analysis@abs.gov.au>.

RELATED PRODUCTS

30 Recent publications released by the National Migration Statistics Unit (ABS) include:

- *Guide to Migrant Statistical Sources* (cat. no. 3414.0)
- *Migrant Data Matrices* (cat. no. 3415.0)
- *Migrant Statistics News* (cat. no. 3413.0)

31 Users of these statistics may also wish to refer to the following ABS products:

- *Australian Demographic Statistics* (cat. no. 3101.0) – issued quarterly
- *Australian Historical Population Statistics* (cat. no. 3105.0.65.001)
- Demography Working papers, ABS website, <<http://www.abs.gov.au>>
- *Information Paper: Demographic Estimates and Projections: Concepts, Sources and Methods* (cat. no. 3228.0)
- *Migration, Australia* (cat. no. 3412.0) – issued annually
- *Overseas Arrivals and Departures, Australia, Time Series Spreadsheets*. These spreadsheets can be accessed on the ABS website from the Downloads tab.
- *Short-term Visitor Arrival Estimates, Australia* (cat. no. 3401.0.55.001) – issued monthly – final issue, May 2008
- *Tourism Statistics News* (cat. no. 8602.0)

32 Related statistics are also published by:

- DIAC, available on the department's website <<http://www.immi.gov.au>>:
 - *Immigration Update*
 - *Population Flows - Immigration Aspects*
 - *Settler Arrivals*
- Tourism Research Australia
- the Australian Government Department of Resources, Energy and Tourism

33 As well as the statistics included in this and related publications, additional demographic information is available on the ABS website, <<http://www.abs.gov.au>>; click Themes, then under People click on Demography. Users can also access the full range of electronic ABS data free of charge on the ABS website.

34 The ABS also issues a daily Release Advice on the website which details the products to be released in the week ahead.

ADDITIONAL STATISTICS AVAILABLE

35 The ABS may have other relevant data available on request. Generally, a charge is made for providing this information. Inquiries should be made to the National Information and Referral Service on 1300 135 070.

36 The following variables are available for overseas arrival and departure data:

- Age
- Airport/port of arrival/departure
- Arrival/departure date
- Australian residents:
 - Country spent/intend to spend most time abroad

EXPLANATORY NOTES *continued*

ADDITIONAL STATISTICS

AVAILABLE *continued*

- Intended/actual time away from Australia
- Main reason for journey (only available for long-term and short-term residents departing)
- State or territory of intended address/state or territory of residence
- Category of travel
- Citizenship (nationality)
- Country of birth
- Country of embarkation/disembarkation
- Intention to live in Australia for next 12 months (not available for short-term movements)
- Marital status (not available for Australian and New Zealand citizens)
- Occupation (not available for short-term movements)
- Overseas visitors:
 - Country of residence
 - Intended/actual length of stay
 - Main reason for journey (only available for long-term and short-term visitors arriving)
 - State or territory of intended address/in which most time was spent
- Permanent migrants:
 - Previous/future country of residence
 - State or territory of intended address/lived
- Sex

ACKNOWLEDGMENTS

37 This publication draws extensively on information provided by DIAC. The ABS also uses information provided freely by individuals, businesses, governments and other organisations. Their continued cooperation is very much appreciated; without it, the wide range of statistics published by the ABS would not be available. Information received by the ABS is treated in strict confidence as required by the *Census and Statistics Act 1905*.

APPENDIX 1 PASSENGER CARDS

INCOMING CARD - FRONT

<p>Incoming passenger card • Australia</p> <p>PLEASE COMPLETE IN ENGLISH WITH A BLUE OR BLACK PEN</p> <p>▶ Family/surname <input type="text"/></p> <p>▶ Given names <input type="text"/></p> <p>▶ Passport number <input type="text"/></p> <p>◆ Flight number or name of ship <input type="text"/></p> <p>▶ Intended address in Australia <input type="text"/></p> <p style="margin-left: 20px;">State <input type="text"/></p> <p>▶ Do you intend to live in Australia for the next 12 months? Yes <input type="checkbox"/> No <input type="checkbox"/></p> <p>▶ If you are NOT an Australian citizen:</p> <p style="margin-left: 20px;">Do you have tuberculosis? Yes <input type="checkbox"/> No <input type="checkbox"/></p> <p style="margin-left: 20px;">Do you have any criminal conviction/s? Yes <input type="checkbox"/> No <input type="checkbox"/></p>	<p>YOU MUST ANSWER EVERY QUESTION – IF UNSURE, <input checked="" type="checkbox"/> Yes</p> <p>▶ Are you bringing into Australia:</p> <ol style="list-style-type: none"> 1. Goods that may be prohibited or subject to restrictions, such as medicines, steroids, firearms, weapons of any kind or illicit drugs? Yes <input type="checkbox"/> No <input type="checkbox"/> 2. More than 2250mL of alcohol or 250 cigarettes or 250g of tobacco products? Yes <input type="checkbox"/> No <input type="checkbox"/> 3. Goods obtained overseas or purchased duty and/or tax free in Australia with a combined total price of more than AUD\$900, including gifts? Yes <input type="checkbox"/> No <input type="checkbox"/> 4. Goods/samples for business/commercial use? Yes <input type="checkbox"/> No <input type="checkbox"/> 5. AUD\$10,000 or more in Australian or foreign currency equivalent? Yes <input type="checkbox"/> No <input type="checkbox"/> <hr/> <ol style="list-style-type: none"> 6. Any food - includes dried, fresh, preserved, cooked, uncooked? Yes <input type="checkbox"/> No <input type="checkbox"/> 7. Wooden articles, plants, parts of plants, traditional medicines or herbs, seeds, bulbs, straw, nuts? Yes <input type="checkbox"/> No <input type="checkbox"/> 8. Animals, parts of animals and animal products including equipment, eggs, biologicals, specimens, birds, fish, insects, shells, bee products, pet food? Yes <input type="checkbox"/> No <input type="checkbox"/> 9. Soil, or articles with soil attached, ie. sporting equipment, shoes, etc? Yes <input type="checkbox"/> No <input type="checkbox"/> <hr/> <ol style="list-style-type: none"> ▶ 10. Have you visited a rural area or been in contact with, or near, farm animals outside Australia in the past 30 days? Yes <input type="checkbox"/> No <input type="checkbox"/> ▶ 11. Have you been in Africa or South America in the last 6 days? Yes <input type="checkbox"/> No <input type="checkbox"/>
<p>DECLARATION</p> <p><i>The information I have given is true, correct and complete. I understand failure to answer any questions may have serious consequences.</i></p>	<p>YOUR SIGNATURE</p> <p><input style="width: 150px; height: 20px;" type="text"/></p> <p style="text-align: right;">Day <input type="text"/> <input type="text"/> Month <input type="text"/> <input type="text"/> Year <input type="text"/> <input type="text"/> <input type="text"/> <input type="text"/></p>
<p>TURN OVER THE CARD </p> <p>English</p>	

INCOMING CARD - BACK

<p>YOUR CONTACT DETAILS IN AUSTRALIA</p> <p>Phone <input type="text"/></p> <p>E-mail <input type="text"/></p> <p>Address <input type="text"/> OR <input type="text"/> State <input type="text"/></p>	<p>EMERGENCY CONTACT DETAILS (FAMILY OR FRIEND)</p> <p>Name <input type="text"/></p> <p>E-mail <input type="text"/></p> <p>Phone <input type="text"/> OR <input type="text"/></p> <p>Mail address <input type="text"/></p>	
<p>PLEASE COMPLETE IN ENGLISH</p> <p>▶ In which country did you board this flight or ship? <input type="text"/></p> <p>◆ What is your usual occupation? <input type="text"/></p> <p>▶ Nationality as shown on passport <input type="text"/></p> <p>▶ Date of birth Day <input type="text"/> <input type="text"/> Month <input type="text"/> <input type="text"/> Year <input type="text"/> <input type="text"/></p>	<p>PLEASE <input checked="" type="checkbox"/> AND ANSWER A OR B OR C</p> <div style="display: flex; justify-content: space-between;"> <div style="width: 30%; border: 1px solid black; padding: 5px;"> <p>A Migrating permanently to Australia <input type="checkbox"/></p> </div> <div style="width: 30%; border: 1px solid black; padding: 5px;"> <p>B Visitor or temporary entrant <input type="checkbox"/></p> <p>▶ Your intended length of stay in Australia Years <input type="text"/> Months <input type="text"/> Days <input type="text"/> OR <input type="text"/></p> <p>▶ Your country of residence <input type="text"/></p> <p>▶ Your main reason for coming to Australia (X one only)</p> <p style="margin-left: 20px;">Convention/conference <input type="checkbox"/> 1 Employment <input type="checkbox"/> 4 Holiday <input type="checkbox"/> 7</p> <p style="margin-left: 20px;">Business <input type="checkbox"/> 2 Education <input type="checkbox"/> 5 Other <input type="checkbox"/> 8</p> <p style="margin-left: 20px;">Visiting friends or relatives <input type="checkbox"/> 3 Exhibition <input type="checkbox"/> 6</p> </div> <div style="width: 30%; border: 1px solid black; padding: 5px;"> <p>C Resident returning to Australia <input type="checkbox"/></p> <p>▶ Country where you spent most time abroad <input type="text"/></p> </div> </div> <div style="border: 1px solid black; padding: 5px; margin-top: 5px; text-align: center;"> <p>MAKE SURE YOU HAVE COMPLETED BOTH SIDES OF THIS CARD. PRESENT THIS CARD ON ARRIVAL WITH YOUR PASSPORT.</p> </div>	
<p><small>Information sought on this form is required to administer immigration, customs, quarantine, statistical, health, wildlife and currency laws of Australia and its collection is authorised by legislation. It will be disclosed only to agencies administering these areas and those entitled to receive it under Australian law. The leaflet <i>Safeguarding your personal information</i> is available at Australian ports and airports.</small></p>	<p style="font-size: 1.2em; font-weight: bold;">03051504</p>	<p><small>© Commonwealth of Australia 2005 15 (Design date 03/05)</small></p>

Incoming passenger card used from March 2005.

APPENDIX 1 PASSENGER CARDS *continued*

OUTGOING CARD - FRONT

<p>Outgoing passenger card • Australia</p> <p>PLEASE COMPLETE IN ENGLISH WITH A BLUE OR BLACK PEN</p> <p>▶ Family/surname <input type="text"/></p> <p>▶ Given names <input type="text"/></p> <p>▶ Passport number <input type="text"/></p> <p>▶ Flight number or name of ship <input type="text"/></p> <p>▶ Country where you will get off this flight <input type="text"/></p> <p>▶ What is your usual occupation? <input type="text"/></p> <p>▶ Nationality as shown on passport <input type="text"/></p> <p>▶ Date of birth <input type="text"/> Day <input type="text"/> Month <input type="text"/> Year <input type="text"/></p>	<p>▶ PLEASE <input checked="" type="checkbox"/> AND ANSWER D OR E OR F</p> <div style="display: flex; justify-content: space-between;"> <div style="width: 30%;"> <p>D Visitor or temporary entrant departing <input type="checkbox"/></p> <p>▶ State where you spent most time</p> <table border="1" style="width: 100%; border-collapse: collapse;"> <tr> <td>NSW</td><td><input type="checkbox"/></td> <td>Vic</td><td><input type="checkbox"/></td> </tr> <tr> <td>Qld</td><td><input type="checkbox"/></td> <td>SA</td><td><input type="checkbox"/></td> </tr> <tr> <td>WA</td><td><input type="checkbox"/></td> <td>Tas</td><td><input type="checkbox"/></td> </tr> <tr> <td>NT</td><td><input type="checkbox"/></td> <td>ACT</td><td><input type="checkbox"/></td> </tr> <tr> <td></td><td></td> <td>Other</td><td><input type="checkbox"/></td> </tr> </table> <p>▶ Country of Residence <input type="text"/></p> </div> <div style="width: 30%;"> <p>E Australian resident departing temporarily <input type="checkbox"/></p> <p>▶ In which State do you live?</p> <table border="1" style="width: 100%; border-collapse: collapse;"> <tr> <td>NSW</td><td><input type="checkbox"/></td> <td>Vic</td><td><input type="checkbox"/></td> <td>Qld</td><td><input type="checkbox"/></td> </tr> <tr> <td>SA</td><td><input type="checkbox"/></td> <td>WA</td><td><input type="checkbox"/></td> <td>Tas</td><td><input type="checkbox"/></td> </tr> <tr> <td>NT</td><td><input type="checkbox"/></td> <td>ACT</td><td><input type="checkbox"/></td> <td>Other</td><td><input type="checkbox"/></td> </tr> </table> <p>Years <input type="text"/> Months <input type="text"/> Days <input type="text"/></p> <p>▶ Intended length of stay overseas <input type="text"/> OR <input type="text"/></p> <p>▶ Country where you will spend most time abroad <input type="text"/></p> <p>▶ Main reason for overseas travel (<input checked="" type="checkbox"/> one only):</p> <table border="1" style="width: 100%; border-collapse: collapse;"> <tr> <td>Convention/conference</td><td><input type="checkbox"/> 1</td> <td>Employment</td><td><input type="checkbox"/> 5</td> </tr> <tr> <td>Business</td><td><input type="checkbox"/> 2</td> <td>Education</td><td><input type="checkbox"/> 6</td> </tr> <tr> <td>Visiting friends or relatives</td><td><input type="checkbox"/> 3</td> <td>Exhibition</td><td><input type="checkbox"/> 7</td> </tr> <tr> <td>Holiday</td><td><input type="checkbox"/> 4</td> <td>Other</td><td><input type="checkbox"/> 8</td> </tr> </table> </div> </div> <div style="width: 30%;"> <p>F Australian resident departing permanently <input type="checkbox"/></p> <p>▶ In which State did you live?</p> <table border="1" style="width: 100%; border-collapse: collapse;"> <tr> <td>NSW</td><td><input type="checkbox"/></td> <td>Vic</td><td><input type="checkbox"/></td> </tr> <tr> <td>Qld</td><td><input type="checkbox"/></td> <td>SA</td><td><input type="checkbox"/></td> </tr> <tr> <td>WA</td><td><input type="checkbox"/></td> <td>Tas</td><td><input type="checkbox"/></td> </tr> <tr> <td>NT</td><td><input type="checkbox"/></td> <td>ACT</td><td><input type="checkbox"/></td> </tr> <tr> <td></td><td></td> <td>Other</td><td><input type="checkbox"/></td> </tr> </table> <p>▶ What is your country of future residence? <input type="text"/></p> </div>	NSW	<input type="checkbox"/>	Vic	<input type="checkbox"/>	Qld	<input type="checkbox"/>	SA	<input type="checkbox"/>	WA	<input type="checkbox"/>	Tas	<input type="checkbox"/>	NT	<input type="checkbox"/>	ACT	<input type="checkbox"/>			Other	<input type="checkbox"/>	NSW	<input type="checkbox"/>	Vic	<input type="checkbox"/>	Qld	<input type="checkbox"/>	SA	<input type="checkbox"/>	WA	<input type="checkbox"/>	Tas	<input type="checkbox"/>	NT	<input type="checkbox"/>	ACT	<input type="checkbox"/>	Other	<input type="checkbox"/>	Convention/conference	<input type="checkbox"/> 1	Employment	<input type="checkbox"/> 5	Business	<input type="checkbox"/> 2	Education	<input type="checkbox"/> 6	Visiting friends or relatives	<input type="checkbox"/> 3	Exhibition	<input type="checkbox"/> 7	Holiday	<input type="checkbox"/> 4	Other	<input type="checkbox"/> 8	NSW	<input type="checkbox"/>	Vic	<input type="checkbox"/>	Qld	<input type="checkbox"/>	SA	<input type="checkbox"/>	WA	<input type="checkbox"/>	Tas	<input type="checkbox"/>	NT	<input type="checkbox"/>	ACT	<input type="checkbox"/>			Other	<input type="checkbox"/>
NSW	<input type="checkbox"/>	Vic	<input type="checkbox"/>																																																																								
Qld	<input type="checkbox"/>	SA	<input type="checkbox"/>																																																																								
WA	<input type="checkbox"/>	Tas	<input type="checkbox"/>																																																																								
NT	<input type="checkbox"/>	ACT	<input type="checkbox"/>																																																																								
		Other	<input type="checkbox"/>																																																																								
NSW	<input type="checkbox"/>	Vic	<input type="checkbox"/>	Qld	<input type="checkbox"/>																																																																						
SA	<input type="checkbox"/>	WA	<input type="checkbox"/>	Tas	<input type="checkbox"/>																																																																						
NT	<input type="checkbox"/>	ACT	<input type="checkbox"/>	Other	<input type="checkbox"/>																																																																						
Convention/conference	<input type="checkbox"/> 1	Employment	<input type="checkbox"/> 5																																																																								
Business	<input type="checkbox"/> 2	Education	<input type="checkbox"/> 6																																																																								
Visiting friends or relatives	<input type="checkbox"/> 3	Exhibition	<input type="checkbox"/> 7																																																																								
Holiday	<input type="checkbox"/> 4	Other	<input type="checkbox"/> 8																																																																								
NSW	<input type="checkbox"/>	Vic	<input type="checkbox"/>																																																																								
Qld	<input type="checkbox"/>	SA	<input type="checkbox"/>																																																																								
WA	<input type="checkbox"/>	Tas	<input type="checkbox"/>																																																																								
NT	<input type="checkbox"/>	ACT	<input type="checkbox"/>																																																																								
		Other	<input type="checkbox"/>																																																																								

OUTGOING CARD - BACK

<p>▶ Are you taking out of Australia AUD\$10,000 or more in Australian or foreign currency equivalent? If answered 'Yes' you must complete an International Currency Transfer Report to present with this card. Yes <input type="checkbox"/> No <input type="checkbox"/></p> <p>▶ If you worked in Australia as a temporary resident you may be eligible for a Departing Australia Superannuation Payment (DASP).</p> <p>If you would like to receive further information please provide your e-mail address.</p> <p>For example WILLIAMS_JENNIFER @ HOTMAIL.COM</p> <p style="text-align: right;"><input type="text"/></p> <p style="text-align: right;"><input type="text"/></p> <p>Visit www.ato.gov.au/super for more DASP information.</p>	<div style="border: 1px solid black; padding: 5px; width: fit-content; margin: 0 auto;"> <p>MAKE SURE YOU HAVE COMPLETED BOTH SIDES OF THIS CARD. PRESENT THIS CARD, ON DEPARTURE WITH YOUR BOARDING PASS AND PASSPORT.</p> </div>
<p><small>Information sought on this form is required to administer immigration, customs, quarantine, statistical, health, wildlife and currency laws of Australia and its collection is authorised by legislation. It will be disclosed only to agencies administering these areas and those entitled to receive it under Australian law. The leaflet <i>Safeguarding your personal information</i> is available at Australian ports and airports.</small></p>	<div style="border: 1px solid black; padding: 5px; width: fit-content; margin: 0 auto;"> <p>07031607</p> </div> <p style="font-size: small;">© Commonwealth of Australia 2003 16 (Design date 07/03) MCMILLAN PRINT</p>

Outgoing passenger card used from July 2003.

APPENDIX 2 DATA QUALITY ISSUES

SCANNING AND IMAGING

The introduction of a new passenger card processing system from July 2001 has meant that information is now available on the frequency and impact of data item imputation. Much of this information has not been available previously. Additionally, the move to a new processing system has also given rise to new data quality issues directly associated with scanning and imaging.

DEFECTIVE CARDS

There are a small number of unreadable or damaged passenger cards for each month. The Australian Bureau of Statistics (ABS) receives a count of these cards from the Department of Immigration and Citizenship (DIAC) by movement direction, box type (category of traveller) and port of clearance. The information on these cards is then physically processed by the ABS and included in the estimates presented here.

DURATION OF STAY

From July 1998 DIAC has been able to determine the actual length of stay for departing overseas visitors and arriving Australian residents which was previously collected from information on intended length of stay supplied on the arrival and departure card by the passenger. This new method has resulted in a change in data distribution with the number of passengers staying for one year exactly declining significantly when compared with movements prior to July 1998.

The introduction of the new passenger card processing system from July 2001 has shown further evidence of rounding to exactly one year in intended duration of stay/travel as reported by visitors arriving in Australia and Australian residents departing the country. To reflect the historical movement patterns, the records with a reported duration of exactly one year are allocated to short-term and long-term. For visitors, 75% of such records are allocated to short-term and 25% to long-term. The ratio is 67:33 for residents departing Australia.

Each month there are records for some long-term residents returning to Australia and long-term visitors departing Australia which could not be matched with a previous arrival or departure, since 1 July 1998. For these cases the previous movement date is imputed to be 1 July 1998 and the imputed duration of stay/absence calculated.

NEW ZEALAND CITIZENS

Under the Trans-Tasman Agreement, New Zealand (NZ) citizens are not required to have a visa to travel to Australia. As a result, on arrival in Australia their visa documentation cannot be used to determine whether they are either a permanent migrant or a temporary visitor, or an Australian resident returning from NZ. DIAC believes that a substantial proportion of holders of NZ passports tick Box A (migrating to Australia) each time they arrive in the country, causing an overcount of NZ migrants entering Australia.

The following edits were applied to correct the overcounting of NZ migrants:

July 2001 to June 2002

With the introduction of the new processing system from July 2001, DIAC coded all NZ citizen arrivals who had ticked Box A and had been to Australia previously (based on immigration records) to resident returning (Box C). If these people were visitors previously, this recoding had the effect of incorrectly reducing the number of NZ migrants whilst at the same time incorrectly increasing the number of NZ citizen returning residents. This problem was overcome by moving the NZ citizens that have been changed by DIAC from Box A to Box C back to Box A.

July 2002 onwards

From July 2002, DIAC has introduced a new edit system to ensure accurate Permanent Arrivals of NZ citizens statistics. Where the person ticks Box A on his/her passenger card (first arrival as a migrant) the record is verified by checking previous entries and related passenger card records and if the person is previously recorded as a migrant or resident then they will be counted as returning residents. This will result in more accurate recording of NZ citizens who are migrating to Australia as against those who are residents returning.

APPENDIX 2 DATA QUALITY ISSUES *continued*

NON-RESPONSE

A1

 NON-RESPONSE RATES PRIOR TO IMPUTATION (a)—November 2008

	<i>Incoming</i>	<i>Outgoing</i>
<i>OAD Variables</i>	%	%
Citizenship (nationality)	—	—
Country of birth	4.7	2.9
Age (date of birth)	—	—
Sex	—	—
Marital status(b)	32.9	37.3
Category of travel	1.7	0.8
Permanent migrant		
Previous/future country of residence	(c)64.9	13.9
Overseas visitor		
Intended/actual length of stay	6.0	1.4
Main reason for journey	6.0	. .
Australian residents		
Actual/intended time away from Australia	0.7	2.9
Main reason for journey	. .	4.0
Occupation(d)	8.8	4.9
Country of embarkment/disembarkment	4.5	3.2
Whether intend to live in Australia for next 12 months	47.7	. .

. . not applicable

— nil or rounded to zero (including null cells)

(a) Non-response rates are unweighted.

(b) Not available for Australian or New Zealand citizens.

(c) See DATA IMPUTATIONS, Country of previous residence, in this Appendix.

(d) Not available for short-term movements.

INTENDED LENGTH OF STAY/TIME AWAY FROM AUSTRALIA

Non-response rates are available for these data items from November 1998. For data prior to November 1998, imputation carried out as part of processing by DIAC has prevented reliable estimation of non-response rates for these two data items.

MAIN REASON FOR JOURNEY

Before the introduction of the redesigned passenger card in July 1998, 5% of short-term visitor arrivals, on average, were recorded as having a reason for journey of 'Other' or 'Not Stated'. This percentage rose to 14% for July, 16% in August and 29% in September 1998 as a result of processing problems. These problems have now been addressed by DIAC, with the percentage of 'Other' and 'Not Stated' dropping in October 1998 to 8% and 7% in November 1998.

From the January 1999 issue of this publication, published figures (table 6 in this issue) referencing these three months were revised. The revised data were calculated by estimating the number of persons responding 'Other/Not Stated' using past trends for each country of citizenship and proportionally allocating any persons in excess of the estimated 'Other/Not Stated' total amongst the remaining categories. 'Not Stated' rates are now separately available from February 1999 onwards.

APPENDIX 2 DATA QUALITY ISSUES *continued*

STATE WHERE SPENT MOST TIME

For the months of August 1998, September 1998 and October 1998, data entry problems experienced by DIAC caused an overstatement of the Northern Territory as the main state of stay with a corresponding understatement for the remaining states and territories. In November 1998 these numbers returned to levels more comparable with previous years, with DIAC indicating that they had instigated data quality procedures to address this issue.

From the January 1999 issue of this publication, published figures (table 11 in this issue) referencing these months were revised. The revised data were calculated by estimating the number of persons indicating the Northern Territory as their main state of stay using past trends and proportionally allocating any persons in excess of these estimates amongst the remaining states and territories.

With the introduction of the new processing system from July 2001, DIAC has provided the ABS with data on all missing values of state of stay and state of usual residence. These missing values are now imputed.

DATA IMPUTATIONS

Data was imputed for non-response for state of stay/residence. For state of stay, non-responses were imputed at the category of traveller and state of clearance level. Non-response rates for state of stay are presented in the table below:

A2 NON-RESPONSE RATES FOR STATE OF STAY BY CATEGORY OF TRAVELLER (a)

<i>Category of traveller</i>	<i>November 2008</i>
	%
Permanent arrivals – settlers	5.9
Long-term residents returning	1.6
Long-term visitors arriving	5.1
Short-term residents returning	0.5
Short-term visitors arriving	7.0
Residents departing permanently	3.2
Long-term residents departing	2.9
Long-term visitors departing	2.9
Short-term residents departing	1.7
Short-term visitors departing	7.1

(a) Non-response rates are weighted.

Non-responses for country of stay and country of usual residence were imputed in two stages. In the first stage, records with country of stay/residence missing were set to country of disembarkation/embarkation if a response was available. In the second stage, for remaining records where country of stay/residence was missing, values were imputed at the category of traveller, reason for journey and country of citizenship level based on responses to other cards within each subgroup. Accordingly, the level of records with data for country of stay/residence not stated has been minimised.

Change in approach to non-response state of stay for long-term visitor departures

A procedure has been applied before prorating of a non-response to state of stay for long-term visitor departures. If a correction to the box marked by a passenger is made (e.g. a visitor marks a resident box), the state of stay recorded in the incorrect box is applied.

Country of stay

Table A3 below presents the percentage of records with country of stay/residence missing as supplied by DIAC and prior to imputation.

APPENDIX 2 DATA QUALITY ISSUES *continued*

Country of stay continued

A3 COUNTRY OF STAY/RESIDENCE NON-RESPONSE RATES BY PASSENGER CARD BOX TYPE (a)

	<i>November 2008</i>
<i>Box type</i>	%
A: Migrating permanently to Australia(b)	64.9
B: Visitor or temporary entrant	6.7
C: Resident returning to Australia	7.8
D: Visitor of temporary entrant departing	5.6
E: Australian resident departing temporarily	1.9
F: Australian resident departing permanently	13.9

- (a) As on initial data supplied by DIAC.
 (b) See DATA IMPUTATIONS, Country of previous residence, in this Appendix.

Table A4 below shows the non-response rates for country of stay/residence following the application of the first stage of imputation.

A4 COUNTRY OF STAY/RESIDENCE NON-RESPONSE RATES BY CATEGORY OF TRAVELLER (a) (b)

	<i>November 2008</i>
<i>Category of traveller</i>	%
Permanent arrivals – settlers(c)	64.9
Long-term residents returning	1.2
Long-term visitors arriving	0.9
Short-term residents returning	0.4
Short-term visitors arriving	0.4
Residents departing permanently	0.7
Long-term residents departing	0.1
Long-term visitors departing	0.4
Short-term residents departing	0.2
Short-term visitors departing	0.2

- (a) Following imputation based on country of disembarkation/embarkation.
 (b) Non-response rates are weighted.
 (c) See DATA IMPUTATIONS, Country of previous residence, in this Appendix.

Country of previous residence

The proportion of permanent arrivals where country of previous residence was not stated increased markedly over the two years to August 2006. Prior to August 2006 ABS imputed this data item for these movements using country of embarkation information as well as stated responses of other permanent arrivals. As a result of this increase and the continuing high level of not stated responses (see table A4), records of permanent arrivals whose country of previous residence is not stated have not been imputed for August 2006 data onwards. For all other arrivals, imputation based on country of embarkation has continued.

Country of birth for New Zealand passport holders

With the introduction of biometric passports for NZ passports, from 21 April 2005, the country of birth of the holder no longer appears on the passport. This was the only source of information on the country of birth of NZ citizens travelling to or from Australia. Therefore, with the increased numbers of travellers holding NZ biometric passports the proportion of movement records with not stated country of birth increased substantially. For other travellers who are not NZ citizens, country of birth information can be obtained from their visa information. Visa information for most NZ citizens is not available as, under the trans-Tasman agreement, they do not need to hold

APPENDIX 2 DATA QUALITY ISSUES *continued*

Country of birth for New Zealand passport holders
continued

a visa to travel to Australia. For August 2007 data, the total number of not stated responses for country of birth as supplied by DIAC was 76,763. NZ passport holders represented approximately 88% of these non-responses.

In order to alleviate this issue the records with not stated responses for country of birth have been imputed at the category of traveller and country of citizenship level from August 2007. As a result, the total number of not stated responses for country of birth has been reduced to 606 and the number of non-responses for NZ citizens to zero. This method of imputation will be in place until a more suitable means of obtaining or imputing country of birth data for NZ citizens can be implemented.

JULY 1998 PROCESSING

Prior to July 1998 the number of overseas-born (excluding NZ) permanent departures of Australian residents was overstated.

In July 1998, DIAC introduced a Box type validation edit to the processing system. This edit checks and corrects the Box type according to the Visa Class/subclass. With the exception of Australian and NZ citizens, only Australian residents departing permanently (Box F) who hold permanent visas are retained in this Box type. For temporary visa holders who incorrectly ticked Box F, their Box type was changed to visitor or temporary entrant departing (Box D). This edit has been ongoing, with over 5,000 records being moved from Box F to Box D in the year 2005–06.

SEPTEMBER 1998
PROCESSING

A problem was experienced in the processing of OAD data for movement dates between 6 September 1998 and 16 September 1998, following the introduction of changes to DIAC's input processing system. This problem may affect in the order of 10% of all September 1998 records used in estimation and result in incorrect details for citizenship, date of birth, sex and country of birth.

PERMANENT ARRIVALS
DURING 1999

The number of permanent arrivals during July to December 1999 was revised in October 2000, as advised by DIAC.

SEPTEMBER 1999
PROCESSING

September 1999 overseas arrivals and departures data are revised for movements from, and to, China (excl. SARs and Taiwan) and Hong Kong (SAR of China) in respect of three variables: country of birth, country of citizenship and country of residence/stay. Changes to 'country of birth' and 'country of citizenship' have been made from data supplied by DIAC. Changes to 'country of residence/stay' have been made by assuming the average proportion of country of birth to country of residence/stay for migrants from China (excl. SARs and Taiwan) and Hong Kong (SAR of China) in September 1995 to September 1998.

SEPTEMBER QUARTER 2000
PROCESSING

A processing error was identified which affected the distribution of short-term resident departures by reason for journey for the months of August and September 2000. Affected data was re-processed, and a revised copy of table 3 for the September quarter 2000 was reissued in the supplement October to December 2000 issue of this publication.

OCTOBER 2005 PROCESSING

In June 2006 DIAC advised that some passenger cards predominantly from Adelaide airport were not processed in time for the October 2005 Overseas Arrivals and Departures data cut off date. The October 2005 data was reprocessed to include the missing records (approximately 7,800) and the revised data was published in the June 2006 issue of this publication. All associated time series spreadsheets and data files were revised.

Differences between the revised October 2005 data and the figures published in the October 2005 issue of this publication were spread across all categories of movement and all variables. A breakdown of the numeric differences by category of movement is provided in the June 2006 issue of this publication.

APPENDIX 2 DATA QUALITY ISSUES *continued*

NOVEMBER 2008
PROCESSING

DIAC has advised that November 2008 data excludes 3,580 arrivals. This represents 0.4% of all arrivals in November 2008. Due to the incoming passenger cards being temporarily mislaid and not available before the November processing deadline, little information is available on the characteristics of the travellers. It is known that the missing information relates to 24 flights into Kingsford-Smith Airport on 24 November 2008. Thirteen countries have been identified as points of embarkation (see table A5 below). The ABS and DIAC are investigating whether the missing November 2008 overseas arrivals data can be reprocessed. If feasible, the November 2008 estimates will be revised and republished in the December 2008 issue of this publication, scheduled for release on 6 February 2009.

A5 MISSING OVERSEAS ARRIVAL RECORDS, Kingsford-Smith Airport, Australia—24 November 2008

<i>Country of embarkation</i>	<i>Missing arrivals</i>
	no.
New Zealand	1 592
Singapore	332
Hong Kong (SAR of China)	287
South Africa	275
UK, CIs & IOM/Singapore	211
United States of America	190
Fiji	162
Philippines	111
Malaysia	110
Tonga	93
New Caledonia	87
Thailand	79
Japan	51
Total	3 580

CHANGE TO PROCESSING OF
INTENDED LENGTH OF STAY

There is evidence to suggest that when completing the intended length of stay question on the incoming passenger card (Box B), some passengers are entering their arrival/departure date or their birth date rather than their intended length of stay.

From September 2003 a rule has been implemented to the data processing system stating that if all three elements are complete (years, months and days), then the intended length of stay is to be coded to a non-response. The ABS currently assigns 'not stated' duration as a short-term movement, however a review of this procedure will be undertaken in the future.

This procedure changes the prior data processing system which read only the years from the field on the passenger cards. The previous data processing system could have added to overestimation of the number of long-term visitor arrivals.

APPENDIX 3 SEASONALLY ADJUSTED AND TREND ESTIMATES

INTRODUCTION

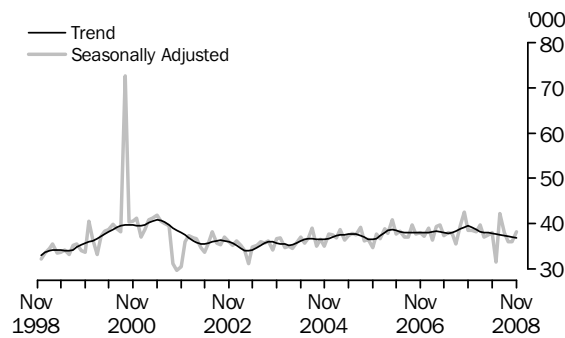
Seasonally adjusted and trend estimates add to the understanding of overseas arrivals and departures (OAD) statistics. Seasonally adjusted estimates allow users to analyse short-term movements including irregular impacts on the series, while trend estimates provide a better method to analyse and monitor the underlying direction of the short-term movement series. In most cases the trend series is the best source of information on the long-term direction of these statistics.

SHORT-TERM VISITOR ARRIVALS

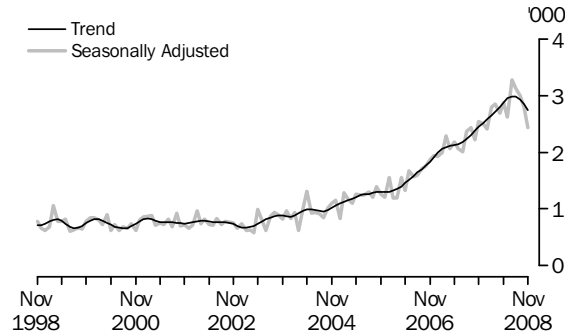
Selected source countries

The graph for the United States of America shows the large increase in the seasonally adjusted series for short-term visitor arrivals in September 2000, during the Olympic Games in Sydney. For Viet Nam the graph shows, for the trend series, strong growth from early 2003 to mid 2008, followed by a subsequent decline. The graph for Japan shows the significant impact of Severe Acute Respiratory Syndrome (SARS) on the seasonally adjusted arrivals series in mid-2003.

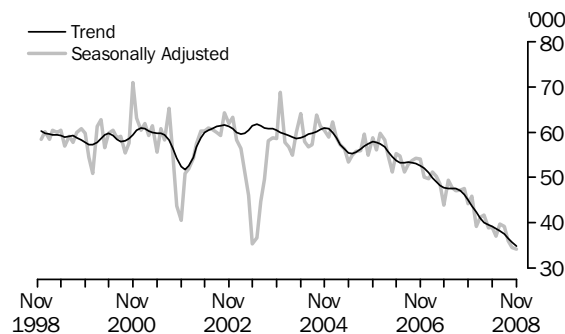
USA, Short-term Visitor Arrivals



VIET NAM, Short-term Visitor Arrivals



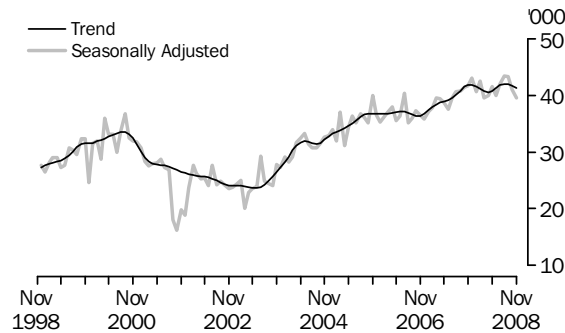
JAPAN, Short-term Visitor Arrivals



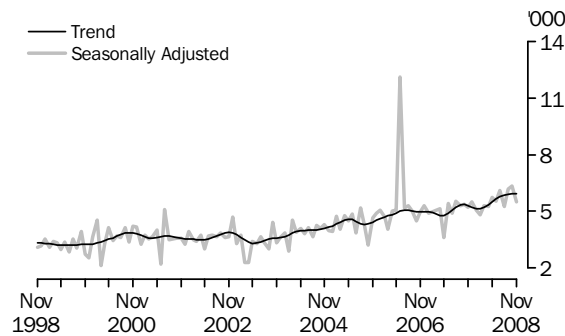
SHORT-TERM RESIDENT
DEPARTURES
Selected destinations

For residents departing to the United States of America the graph illustrates the effect of the 11 September 2001 terrorist attacks in that country on short-term departures of Australian residents to the United States of America. The graph for Germany shows, in the seasonally adjusted series, the effect of Germany hosting the 2006 FIFA World Cup (9 June to 9 July). For Indonesia the graph shows the impact of the 12 October 2002 Bali bombing and the reduced level of travel experienced in the next twelve months. The effect of the 1 October 2005 Bali bombing is also evident and another break in the trend series was introduced. Strong growth resulted in the insertion of a further break in the trend series from December 2006.

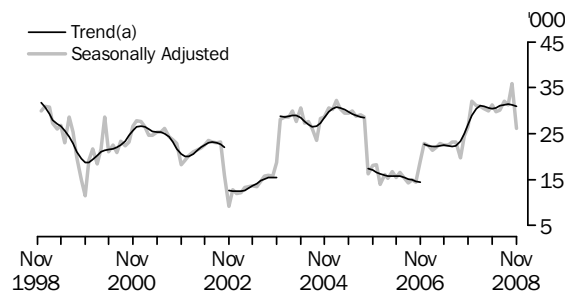
USA, Short-term Resident Departures



GERMANY, Short-term Resident Departures



INDONESIA, Short-term Resident Departures



(a) Breaks in trend series – see Explanatory Notes, paragraph 25.

STANDARD ERRORS

RELIABILITY OF ESTIMATES

Estimates based on a sample are subject to sampling variability, that is, they may differ from those that would be obtained from full enumeration.

The sampling error associated with any estimate can be estimated from the sample results and one measure so derived is the standard error. Given an estimate and the standard error on that estimate, there are about two chances in three that the sample estimate will differ by less than one standard error from the figure that would have been obtained from full enumeration, and about nineteen chances in twenty that the difference will be less than two standard errors. The relative standard error is the standard error on the estimate expressed as a percentage of the estimate.

It would be impractical to publish estimates of standard errors for all figures in individual tables. However, the following table of standard errors and relative standard errors gives an indication of the magnitude of the sampling error associated with any estimate of a particular size for short-term and total movement.

APPROXIMATE STANDARD ERROR ON ESTIMATES FOR STRATIFIED SAMPLE

<i>Estimated number of movements</i>	SHORT-TERM ARRIVAL OR DEPARTURE OF AUSTRALIAN RESIDENT		SHORT-TERM ARRIVAL OR DEPARTURE OF OVERSEAS VISITOR		TOTAL ARRIVAL OR DEPARTURE	
	<i>Standard error</i>	<i>Relative standard error</i>	<i>Standard error</i>	<i>Relative standard error</i>	<i>Standard error</i>	<i>Relative standard error</i>
	no.	%	no.	%	no.	%
5000000	11 302	0.2	7 934	0.2	9 705	0.2
4000000	10 244	0.3	7 170	0.2	8 796	0.2
3000000	9 021	0.3	6 292	0.2	7 746	0.3
2000000	7 536	0.4	5 233	0.3	6 470	0.3
1000000	5 530	0.6	3 815	0.4	4 745	0.5
500000	4 047	0.8	2 778	0.6	3 469	0.7
100000	1 941	1.9	1 325	1.3	1 658	1.7
50000	1 408	2.8	962	1.9	1 201	2.4
10000	662	6.6	455	4.6	561	5.6
5000	476	9.5	329	6.6	402	8.0
2000	307	15.3	214	10.7	258	12.9
1000	219	21.9	154	15.4	184	18.4
750	191	25.4	135	18.0	159	21.3
500	156	31.3	111	22.3	130	26.1
400	140	35.0	100	25.0	117	29.2
300	122	40.5	87	29.1	101	33.7
200	100	49.8	72	36.0	83	41.3
100	71	70.6	52	51.8	58	58.3

An example of the use of this table is as follows. If the estimate of the number of Australian resident departures for short-term visits abroad is 1,000, then the standard error on this estimate is 219; i.e. there are two chances in three that the actual number of Australian resident departures for short-term visits abroad will lie between 781 and 1,219 and nineteen chances in twenty that it will lie between 562 and 1,438.

The larger the size of an estimate the smaller the relative standard error. For any estimate of greater than 5,000,000 the relative standard error will be less than 0.2%.

The estimate of the difference between an estimate in two different periods, or between different estimates from the same period, is also subject to sampling error. The standard error on the difference between any two estimates which are subject to sampling error can be approximated by using the larger standard error of the estimates inflated by a factor of 1.4.

STANDARD ERRORS *continued*

RELIABILITY OF ESTIMATES *continued*

An example of the use of this procedure is as follows. Assume the estimates of the number of arrivals to Australia from Germany during January 2004 and January 2005 are 7,500 and 10,000 respectively. The difference between the 2004 and 2005 figure is 2,500 and the standard errors on these estimates are approximately 392 and 455. The standard error on the difference is approximately 637 (1.4×455), and there are nineteen chances in twenty that the estimate of the difference between the two years will lie between 1,226 and 3,774.

GLOSSARY

Australian resident	An Australian resident is self-defined as reported by travellers when completing an incoming or outgoing passenger card.
Category of movement	<p>Overseas arrivals and departures are classified according to length of stay (in Australia or overseas), as recorded by travellers on passenger cards or derived with reference to previous border crossings. There are three main categories of movement:</p> <ul style="list-style-type: none">■ permanent movements;■ long-term movements (one year or more); and■ short-term movements (less than one year). <p>A significant number of travellers (i.e. overseas visitors to Australia on arrival and Australian residents going abroad) state exactly 12 months or one year as their intended period of stay. Many of them stay for less than that period and on their departure from, or return to, Australia are therefore classified as short-term. Accordingly, in an attempt to maintain consistency between arrivals and departures, movements of travellers who report their actual or intended period of stay as being one year exactly are randomly allocated to long-term or short-term in proportion to the number of movements of travellers who report their actual length of stay as up to one month more, or one month less, than one year.</p>
Country of residence	Country of residence refers to the country in which travellers regard themselves as living or as last having lived.
Intended length of stay	On arrival in Australia, all overseas visitors are asked to state their 'intended length of stay in Australia'. On departure from Australia, all Australian residents are asked to state their 'intended length of stay abroad'.
Long-term arrivals	<p>Long-term arrivals comprise:</p> <ul style="list-style-type: none">■ overseas migrants (comprising visitors and temporary entrants) who intend to stay in Australia for 12 months or more (but not permanently); and■ Australian residents returning from overseas after an absence of 12 months or more.
Long-term departures	<p>Long-term departures comprise:</p> <ul style="list-style-type: none">■ Australian residents who intend to stay abroad for 12 months or more (but not permanently); and■ overseas migrants departing who stayed 12 months or more in Australia.
Main destination	Australian residents travelling overseas are asked on departure for the name of the country in which they intend to spend most time.
Main reason for journey	<p>Overseas visitors/temporary entrants arriving in Australia and Australian residents departing temporarily from Australia are asked to state their main reason for journey. From September 1994, all statistics relating to main reason for journey have been published using the following categories:</p> <ul style="list-style-type: none">■ convention/conference■ business■ visiting friends/relatives■ holiday■ employment■ education■ other. <p>In tabulations of data collected before September 1994, the 'other' category included 'in transit' and the 'holiday' category included both 'student vacation' and 'accompanying business visitor'.</p>
Overseas arrivals and departures	Overseas arrivals and departures (OAD) refer to the recorded arrival or departure of persons through Australian airports (or sea ports). Statistics on OAD relate to the number of movements of travellers rather than the number of travellers (i.e. the multiple movements of individual persons during a given reference period are all counted).

GLOSSARY *continued*

Permanent arrivals	Permanent arrivals (settlers) comprise: <ul style="list-style-type: none">■ travellers who hold migrant visas (regardless of stated intended period of stay);■ New Zealand citizens who indicate an intention to migrate permanently; and■ those who are otherwise eligible to settle (e.g. overseas born children of Australian citizens).
Permanent departures	Permanent departures are: <ul style="list-style-type: none">■ Australian residents (including former settlers) who on departure state that they are departing permanently.
Short-term arrivals	Short-term arrivals comprise: <ul style="list-style-type: none">■ overseas visitors/migrants who intend to stay in Australia for less than 12 months; and■ Australian residents returning from overseas after an absence of less than 12 months.
Short-term departures	Short-term departures comprise: <ul style="list-style-type: none">■ Australian residents who intend to stay abroad for less than 12 months; and■ overseas visitors/migrants departing after a stay of less than 12 months in Australia.
State where spent most time	Overseas visitors are asked on departure for the name of the state or territory in which they spent the most time. This differs from 'state or territory of clearance' which is available on request.

FOR MORE INFORMATION . . .

INTERNET **www.abs.gov.au** the ABS website is the best place for data from our publications and information about the ABS.

INFORMATION AND REFERRAL SERVICE

Our consultants can help you access the full range of information published by the ABS that is available free of charge from our website. Information tailored to your needs can also be requested as a 'user pays' service. Specialists are on hand to help you with analytical or methodological advice.

PHONE 1300 135 070

EMAIL client.services@abs.gov.au

FAX 1300 135 211

POST Client Services, ABS, GPO Box 796, Sydney NSW 2001

FREE ACCESS TO STATISTICS

All statistics on the ABS website can be downloaded free of charge.

WEB ADDRESS www.abs.gov.au